



Create and print a contact sheet

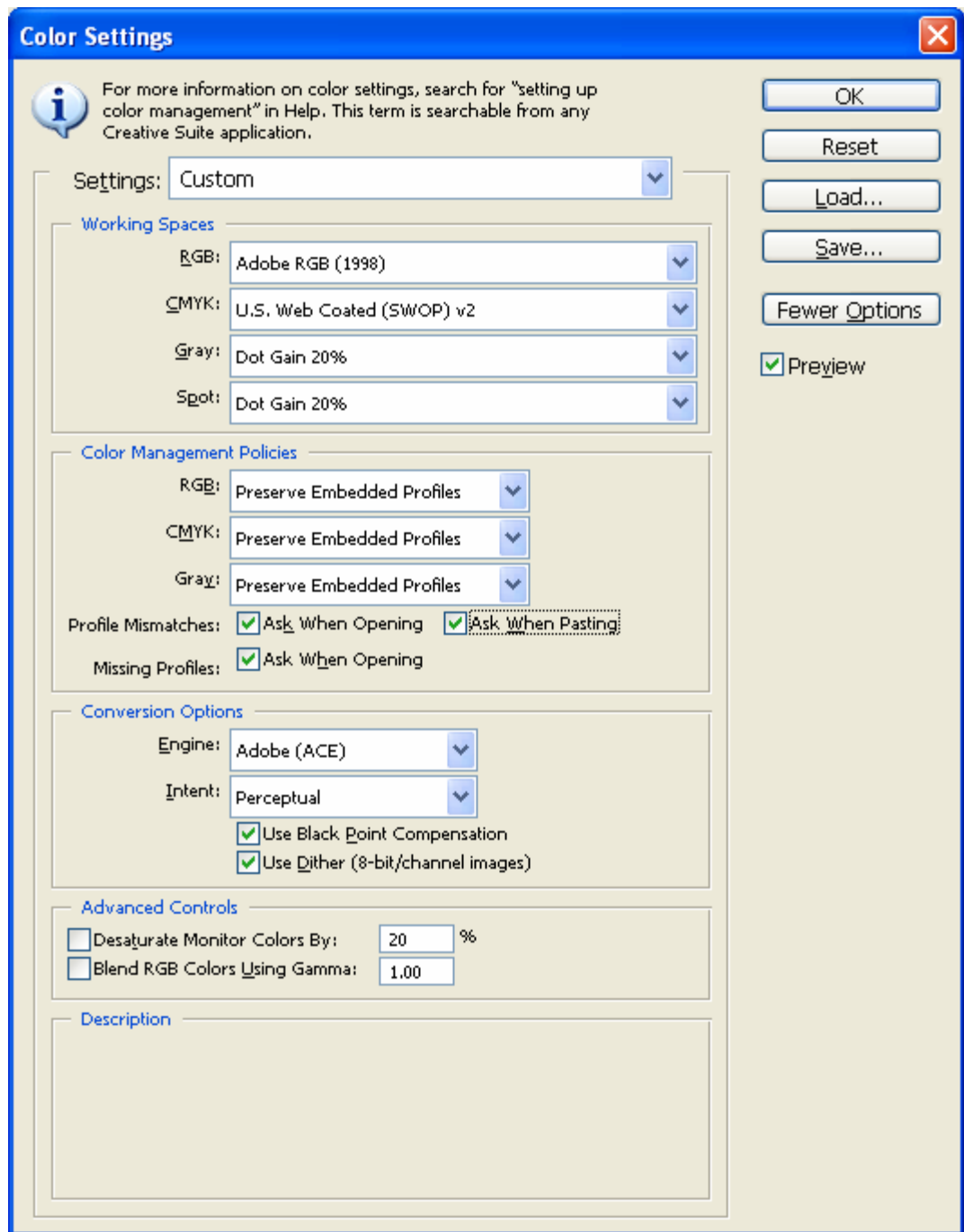
Application: Adobe Photoshop CS2

Printer: HP Designjet Z2100 series

Software: HP raster driver

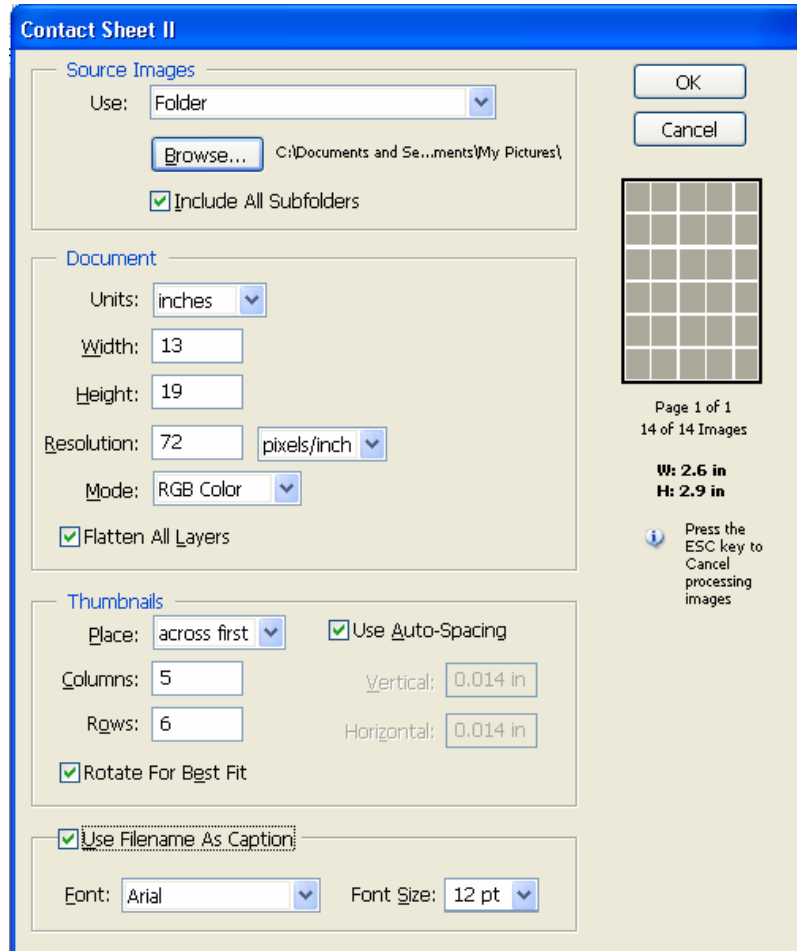
Operating System: Windows

1. First recommendations:
 - See the [Media type functionality & features](#) and choose the most appropriate media.
 - It is essential you have the media type correctly calibrated with the printer and print mode, consult the [Calibrate my printer](#) document.
 - In order to get a correct display, it's also essential you have the monitor calibrated, consult the [Profile my monitor](#) section.
2. Open Adobe Photoshop CS2.
3. Configure the **Color Settings, Edit menu > Color Settings...**:
 - Make sure the **More Options** are displayed.
 - **Working Space > RGB**: Select the profile of the scanner or camera you have used to get the photo (source profile), if you do not have it, select Adobe RGB (1998).
 - **Working Space > CMYK**: Euroscale Coated v2 (for Europe), U.S. Web Coated (SWOP) v2 (for US) and Japan Standard v2 (for Japan).
 - **Color Management Policies**: Preserve Embedded Profiles.
 - **Profile Mismatches**: Check **Ask When Opening** and **Ask When Pasting**.
 - **Missing Profiles**: Check **Ask When Opening**.
 - **Conversion Options > Intent**: Perceptual.



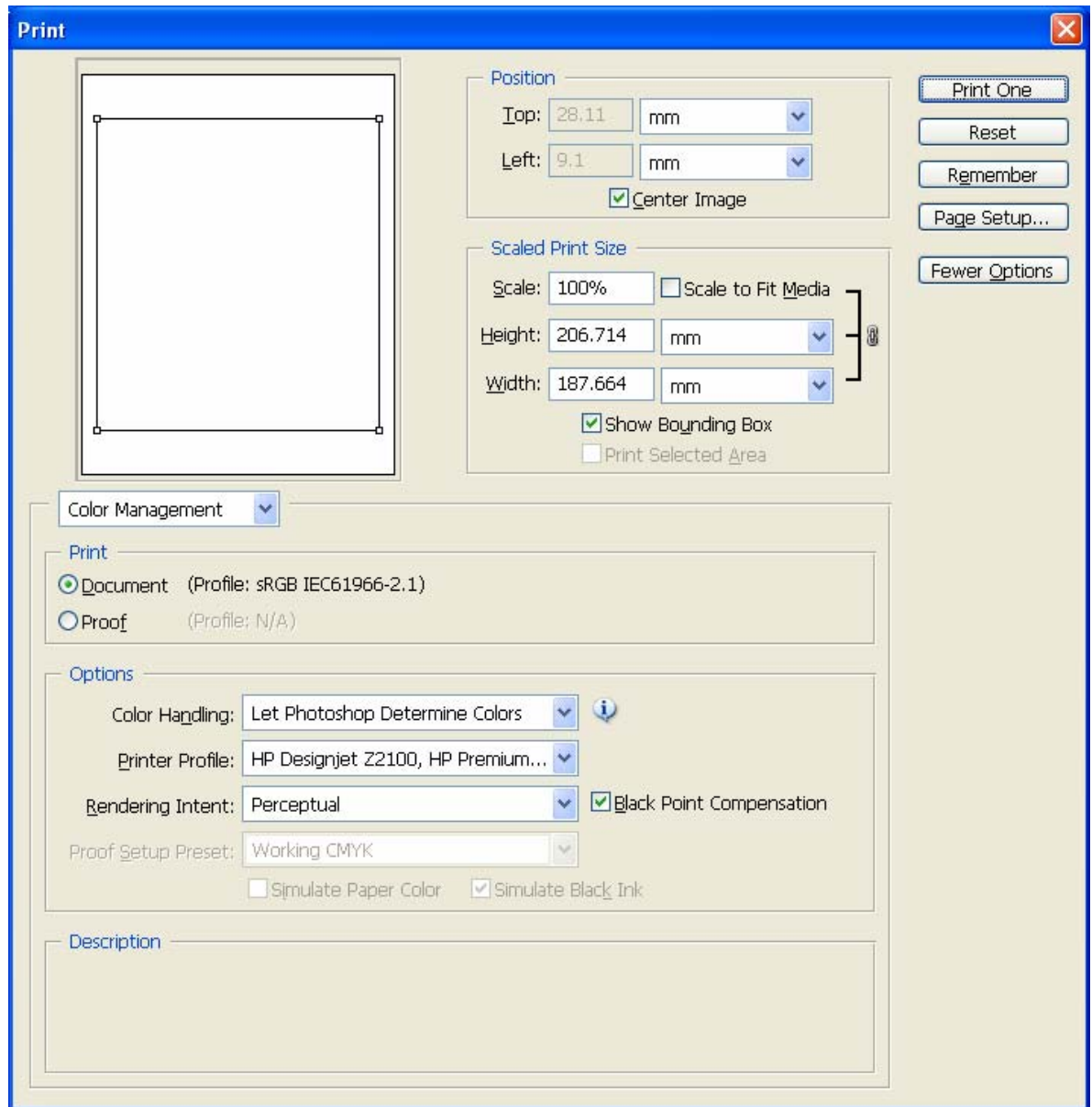
- Click **OK**.
4. Create the contact sheet, **File menu > Automate > Contact Sheet II...**:
- **Source Images > Use:** Folder and then click the **Browse** button to specify the folder containing the images that you want to use. Select **Include All Subfolders** to include images inside any subfolders.
 - **Document:**
 - Specify the **Dimensions** and **Resolution** for the contact sheet.
 - **Mode:** RGB Color.

- **Flatten All Layers:** Select this to create a contact sheet with all images and text on a single layer. Deselect **Flatten All Layers** to create a contact sheet in which each image is on a separate layer and each caption is on a separate text layer.
- **Thumbnails:** Specify layout options for the thumbnail previews. Select **Rotate For Best Fit** to rotate the images, regardless of their orientation, this is so they fit efficiently on a contact sheet.
- **Use Filename As Caption:** Select this to label the thumbnails using their source image filenames. Use the menu to specify a caption font and font size.

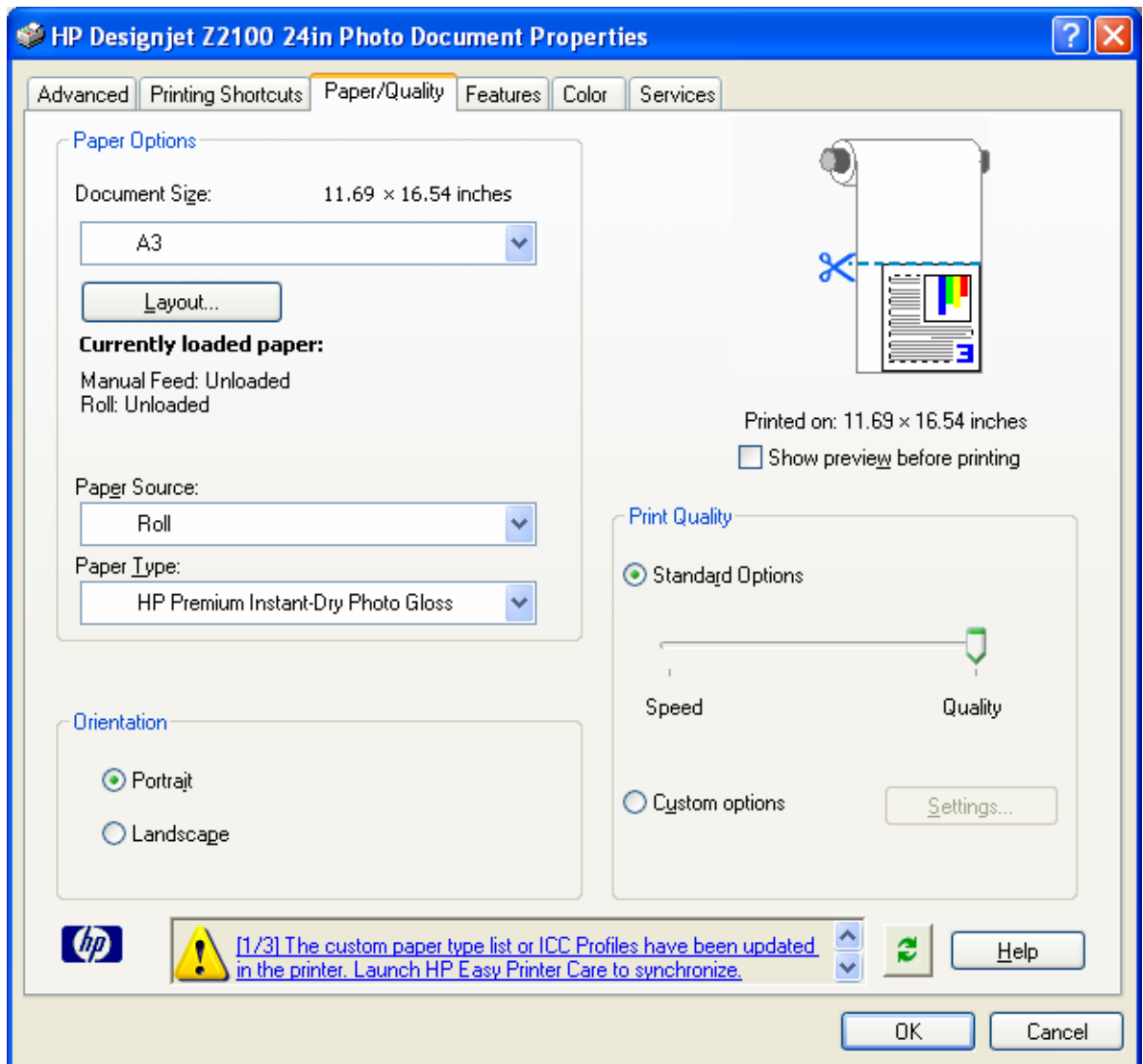


- Click **OK**.
5. Adobe Photoshop **Print with Preview...** settings, **File menu > Print with Preview...**:
- **Page Setup...**:
 - **Printer...**: Select the printer (ex. HP Designjet Z2100 24in Photo) and click **OK**.
 - **Paper Size**: Select the paper size of the media loaded on the printer.
 - **Orientation**: Select the orientation of your image on the paper.
 - Click **OK**.
 - Set the **Position** and the **Scaled Print Size** you need. If the contact sheet is bigger than the print size, select **Scale to Fit Media**.
 - Make sure the **More Options** are displayed.
 - Select the **Color Management** tab:

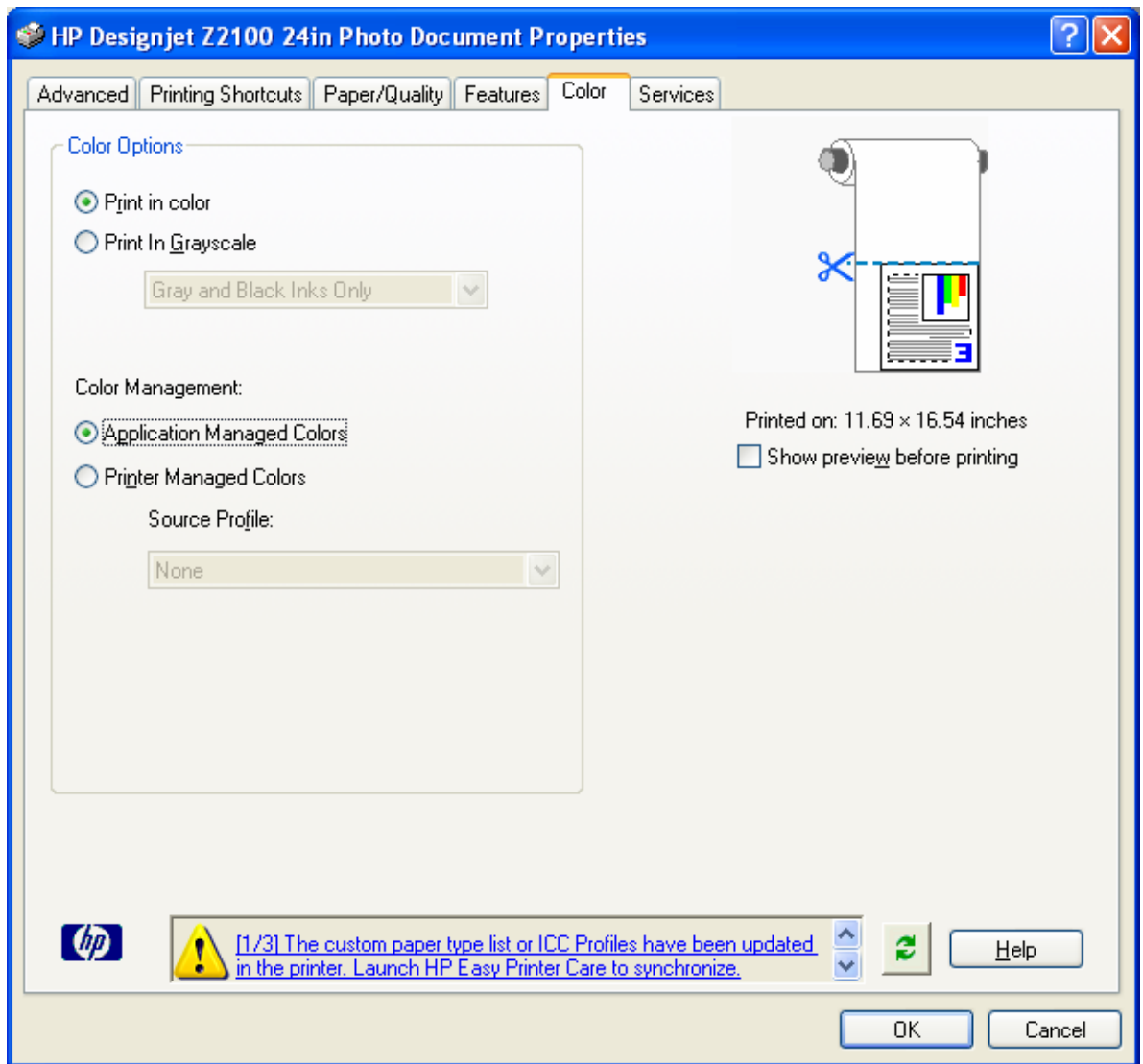
- **Print:** Document.
- **Options > Color Handling:** Let Photoshop Determine Colors.
- **Options > Printer profile:** Select the right profile for your printer and paper type.
- **Options > Rendering Intent:** Perceptual.



6. Click **Print**....
7. Driver Settings; **Properties** button:
 - **Paper/Quality** tab:
 - **Paper Type:** Select the media type that is loaded on the printer.
 - **Print Quality:** Select **Standard Options** and drag the slider to **Quality**.



- **Color** tab > **Color Options:**
 - Select **Print in color.**
 - Select **Color Management > Application Managed Colors.**



- Click **OK** twice.

For more information on HP Designjet products

www.hp.com/go/designjet

© 2006 Hewlett-Packard Development Company, L.P. The information contained herein is subject to change without notice. The only warranties for HP products and services are set forth in the express warranty statements accompanying such products and services. Nothing herein should be construed as constituting an additional warranty. HP shall not be liable for technical or editorial errors or omissions contained herein.

Adobe Photoshop and PostScript are trademarks of Adobe Systems Incorporated. PANTONE is Pantone, Inc.'s check-standard trademark for color.

Rev. 1.0 09/2006

