



Printing a “match to screen”

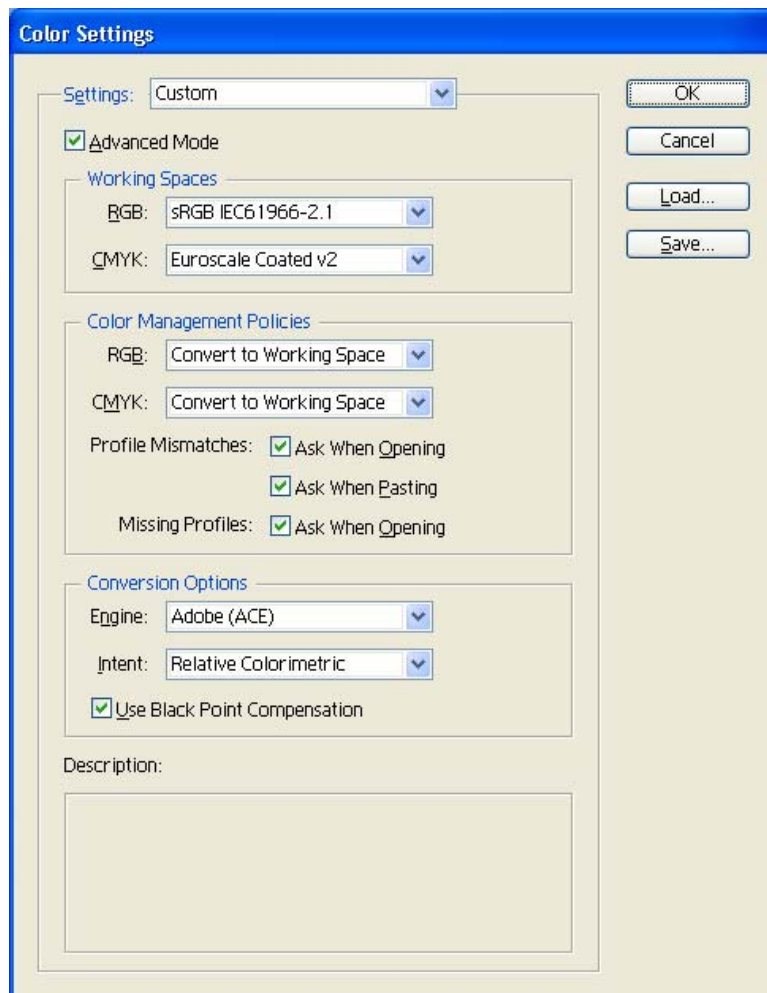
Application: Adobe Illustrator CS

Printer: HP Designjet 4000 series

Software: PS Driver

Operating System: Windows

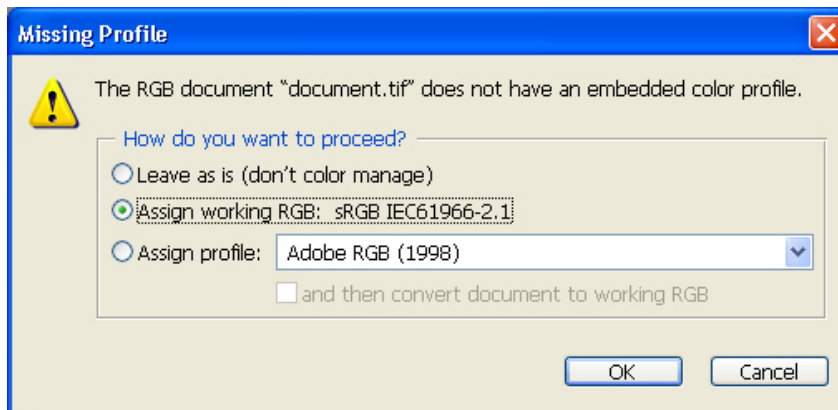
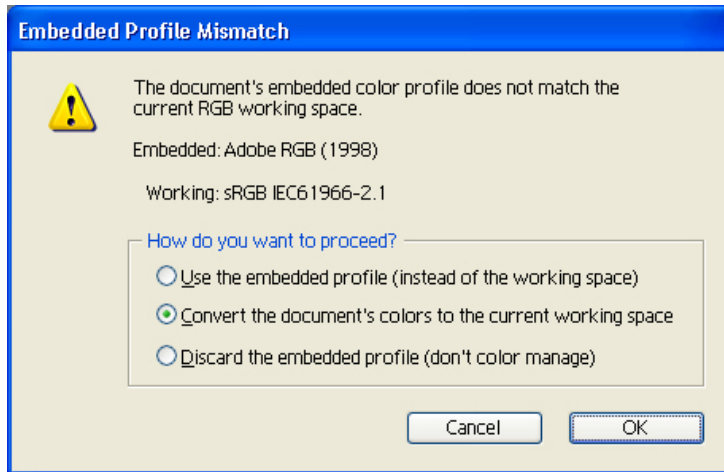
1. First recommendations:
 - See the [Media type functionality & features](#) and choose the most appropriate media.
 - Ensure that the Paper Type setting on the front panel corresponds to the paper you intend to use. It is essential the paper is correctly calibrated for the printer, consult the [Calibrate my printer](#) section.
 - In order to achieve a correct display, it's also essential that the monitor is profiled, consult the [Profile my monitor](#) section.
2. Open Adobe Illustrator CS.
3. Configure the **Color Settings, Edit menu > Color Settings...**:
 - Make sure the **Advanced Mode** check box is ticked.
 - **Working Space > RGB**: sRGB IEC61966-2.1.
 - **Working Space > CMYK**: Euroscale Coated v2 (for Europe), U.S. Web Coated (SWOP) v2 (for US) and Japan Standard v2 (for Japan).
 - **Color Management Policies**: Convert to working space.
 - **Profile Mismatches**: check **Ask When Opening** and **Ask When Pasting**.
 - **Missing Profiles**: check **Ask When Opening**.
 - **Conversion Options > Intent**: Relative Colorimetric.



- Click **OK**.

4. Open the document, **File menu > Open...**:

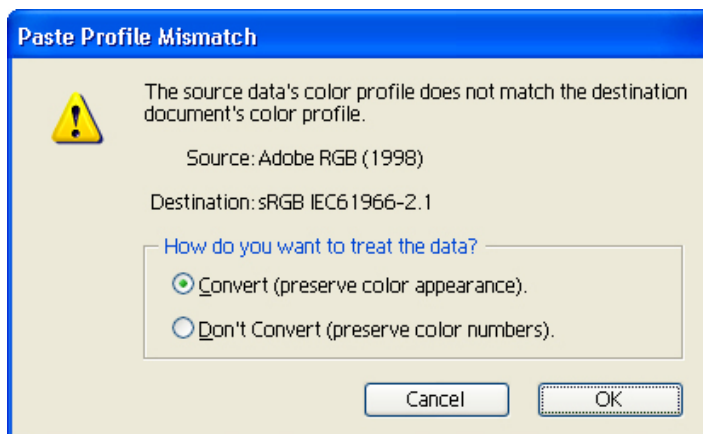
- If the document has an embedded color profile that does not match the current working space, select **Convert document's colors to the working space**. Otherwise, select **Assign working space**.



- Click **OK**

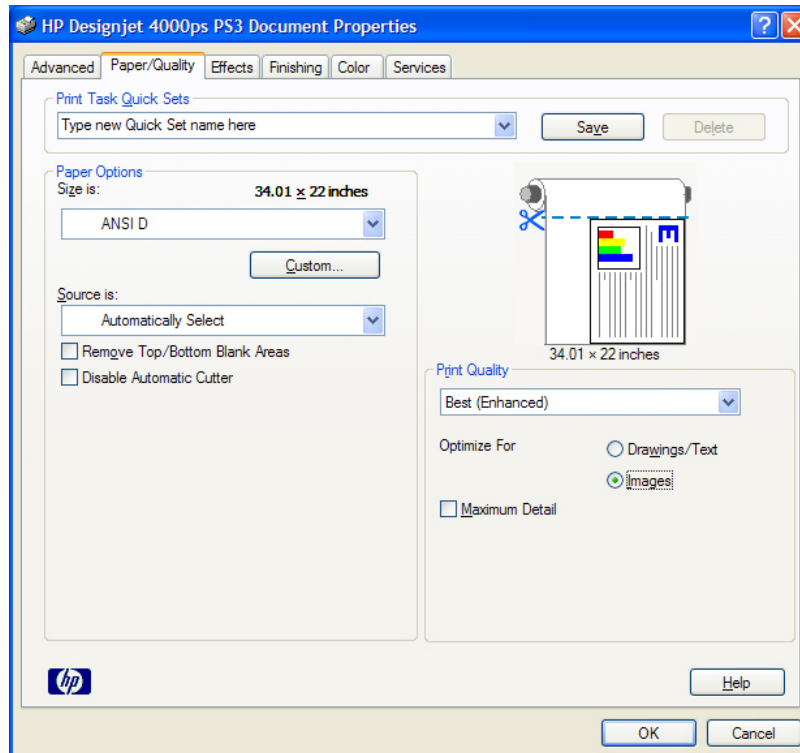
5. If you place an image, you should embed the image in with the document. If it has an embedded profile, it will be converted from the embedded color profile to the document color profile, preserving the color appearance. If it doesn't have an embedded color profile, Illustrator assigns the document color profile.

- **File menu > Place...**: browse the image and uncheck the **Link** checkbox. If you are asked **How do you want to treat the data?** select **Convert**.

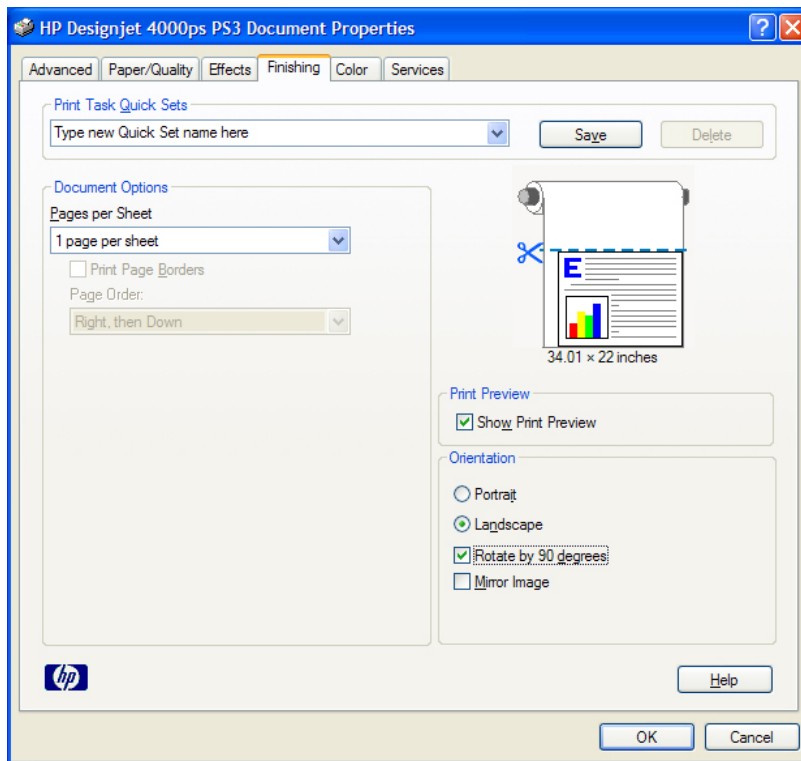


- Click **OK**.

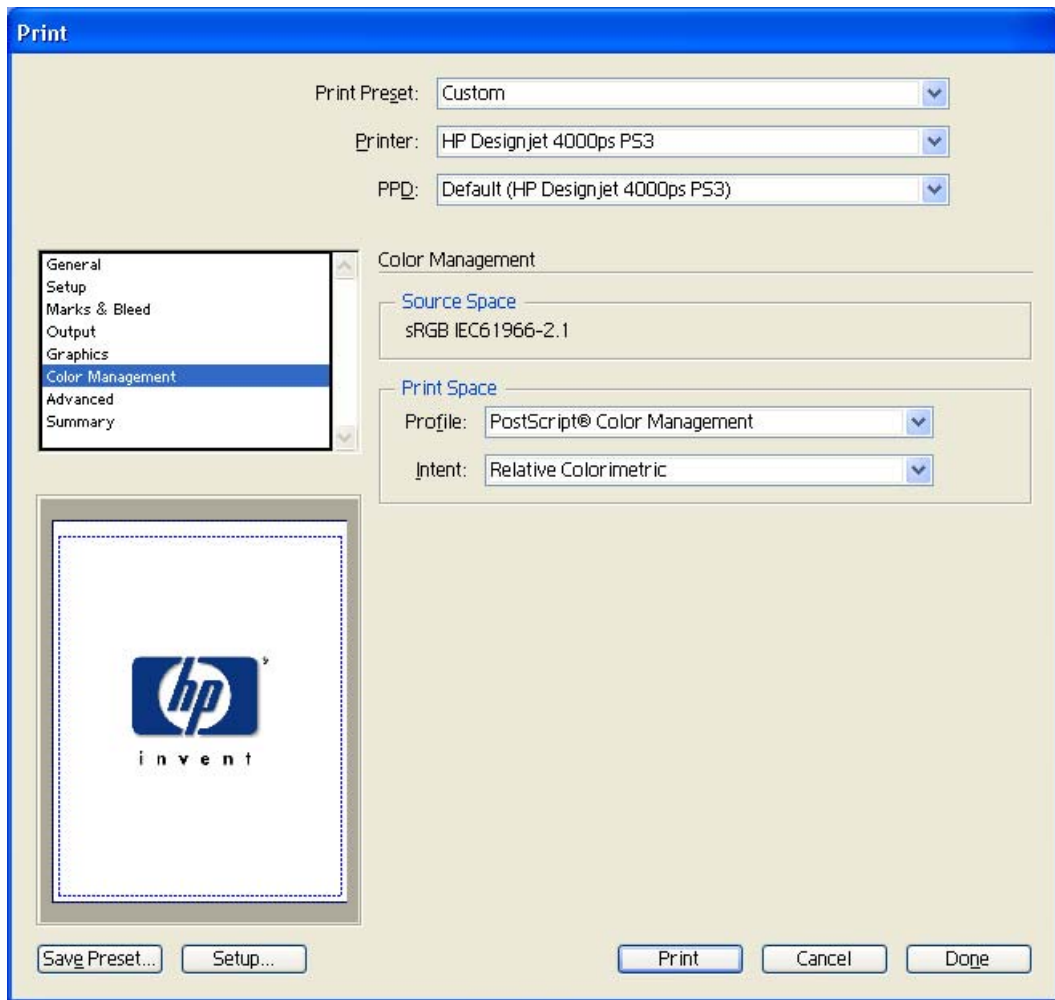
6. Make sure you have configured the **Document Setup** appropriately for your document, **File menu > Document Setup....**
7. Driver settings, **File menu > Print... > Setup... button:**
 - **Select Printer...:** Select the printer (ex. HP Designjet 4000ps PS3).
 - **Preferences:**
 - **Paper/Quality** tab:
 - **Size is:** Select the desired paper size.
 - **Print Quality:** Best (enhanced).
 - **Optimize for:** Images



- **Finishing** tab:
 - **Orientation:** Select the orientation of your document on the paper.



- **Color Options** tab: You don't need to apply these settings because you are going to select the **PostScript Color Management** option in the application. The application tells the driver which source profile and rendering intent should be used for the conversion to the print space, these are the Source Space profile and the Print Space Intent in the application. The driver Input Profile and Rendering Intent will be overridden.
 - Click **OK** until the Illustrator **Print** dialog box.
8. Adobe Illustrator **Print...** settings:
- **General** (left hand menu):
 - **Media > Size:** Defined by Driver.
 - **Options:** Select the scaling option you need.
 - **Output** (left hand menu):
 - **Mode:** Composite.
 - **Color Management** (left hand menu):
 - **Print Space > Profile:** PostScript Color Management
 - **Print Space > Intent:** Relative Colorimetric.



- Click **Print**.

For more information on HP Designjet products

www.hp.com/go/designjet

© 2005 Hewlett-Packard Development Company, L.P. The information contained herein is subject to change without notice. The only warranties for HP products and services are set forth in the express warranty statements accompanying such products and services. Nothing herein should be construed as constituting an additional warranty. HP shall not be liable for technical or editorial errors or omissions contained herein.

Adobe Photoshop and PostScript are trademarks of Adobe Systems Incorporated. PANTONE is Pantone, Inc.'s check-standard trademark for color.

Rev. 1.0, 09/2005

