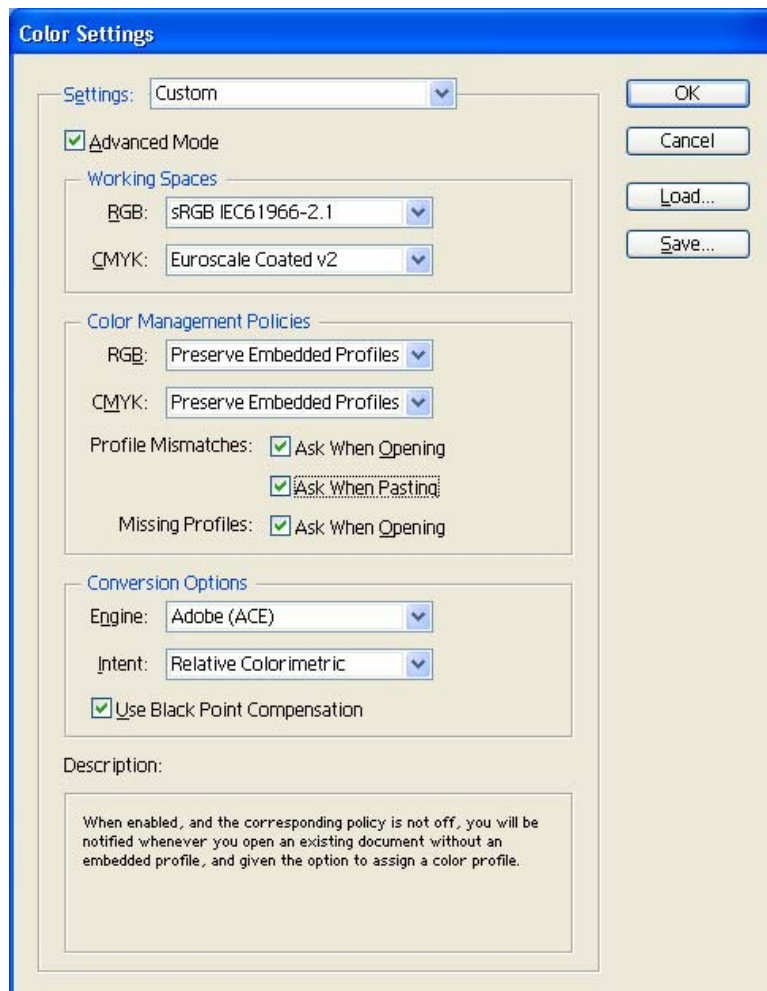




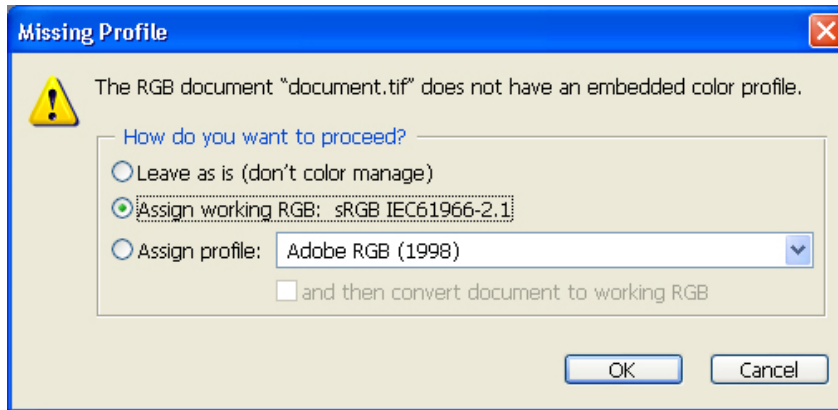
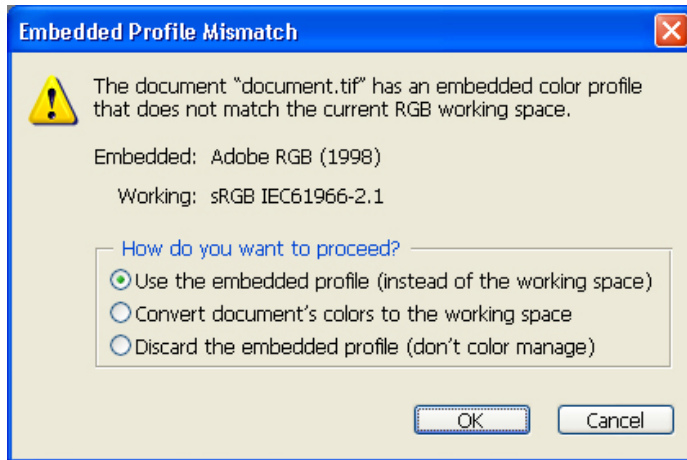
1. First recommendations:
  - See the [Media type functionality & features](#) and choose the most appropriate media.
  - Ensure that the Paper Type setting on the front panel corresponds to the paper you intend to use. It is essential that the paper is correctly calibrated for the printer, consult the [Calibrate my printer](#) section.
  - In order to achieve a correct display, it's also essential that the monitor is profiled, consult the [Calibrate my monitor](#) section.
2. Open Adobe Illustrator CS.
3. Configure the **Color Settings, Edit menu > Color Settings...**:
  - Make sure the **Advanced Mode** check box is ticked.
  - **Working Space > RGB**: sRGB IEC61966-2.1.
  - **Working Space > CMYK**: Euroscale Coated v2 (for Europe), U.S. Web Coated (SWOP) v2 (for US) and Japan Standard v2 (for Japan).
  - **Color Management Policies**: Preserve the Embedded Profiles.
  - **Profile Mismatches**: check **Ask When Opening** and **Ask When Pasting**.
  - **Missing Profiles**: check **Ask When Opening**.
  - **Conversion Options > Intent**: Relative Colorimetric.



- Click **OK**

4. Open the document, **File menu > Open...**:

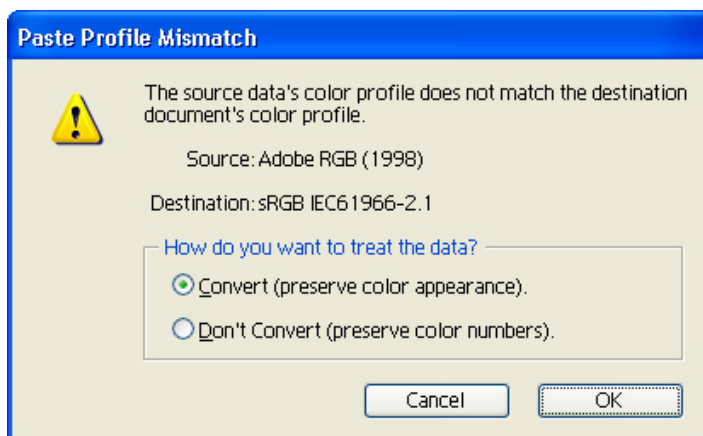
- If the document has an embedded color profile that does not match the current working space, select **Use the embedded profile**. Otherwise, select **Assign working space**.



- Click **OK**

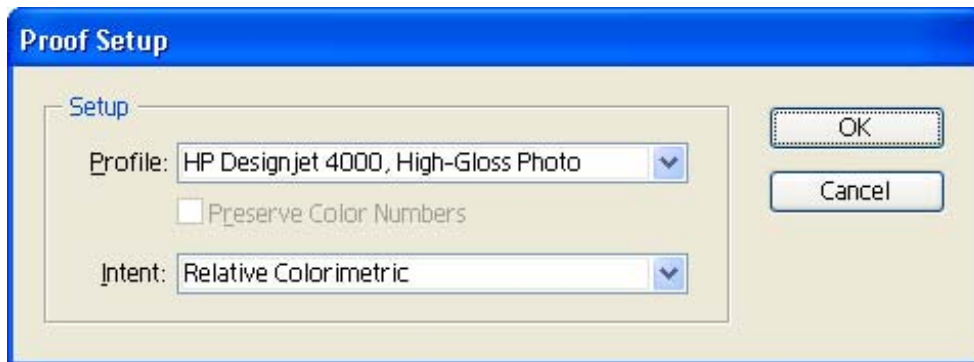
5. If you place an image, you should embed the image in the document. If it has an embedded profile, it will be converted from the embedded color profile to the document color profile, preserving the color appearance. If it doesn't have an embedded color profile, Illustrator will assign the document color profile.

- **File menu > Place...**: browse the image and uncheck the **Link** checkbox. If you are asked **How do you want to treat the data?** Select **Convert**.

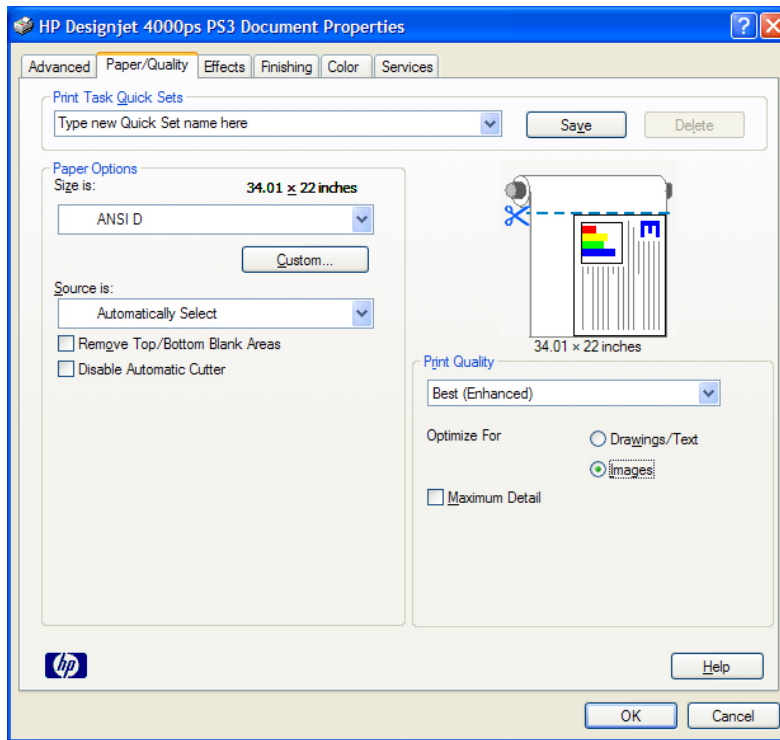


- Click **OK**.

6. Make sure you have configured the **Document Setup** correctly for your document, **File menu > Document Setup...**
7. Configure the **Proof Setup** dialog box in order to proof the output on the monitor, **View Menu > Proof Setup > Custom...**:
  - **Profile:** Select the profile of the output device you want to proof; printer profile generally depends on the printer model and the media type. If you don't have it on the list, you should copy it in the next folder:
    - Windows 98:* WINDOWS>System>Color
    - Windows NT:* WinNT>System32>Color
    - Windows 2000:* C: > WINDOWS > System32 > Spool > Drivers > Color
    - Windows XP:* C: > WINDOWS > System32 > Spool > Drivers > Color
  - **Intent:** Relative Colorimetric.

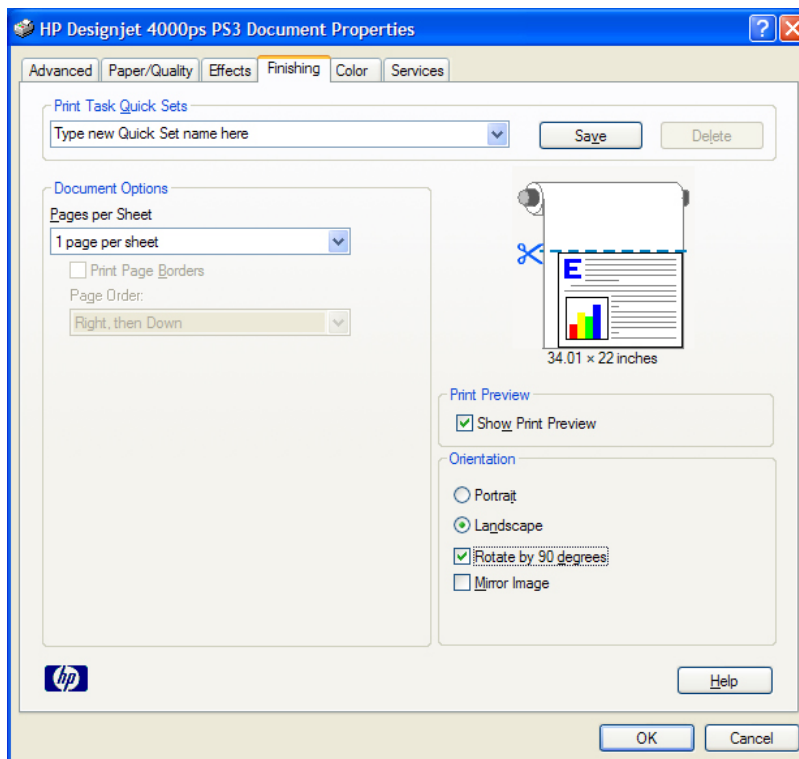


- Click **OK**.
  - Now, you can retouch your image and the monitor will show you how it's going to look once you've printed it.
8. Driver settings, **File menu > Print... > Setup...** button:
    - **Select Printer...:** Select the printer (ex. HP Designjet 4000ps PS3).
    - **Preferences:**
      - **Paper/Quality** tab:
        - **Size is:** Select the desired paper size.
        - **Print Quality:** Best (enhanced).
        - **Optimize for:** Images



- o **Finishing** tab:

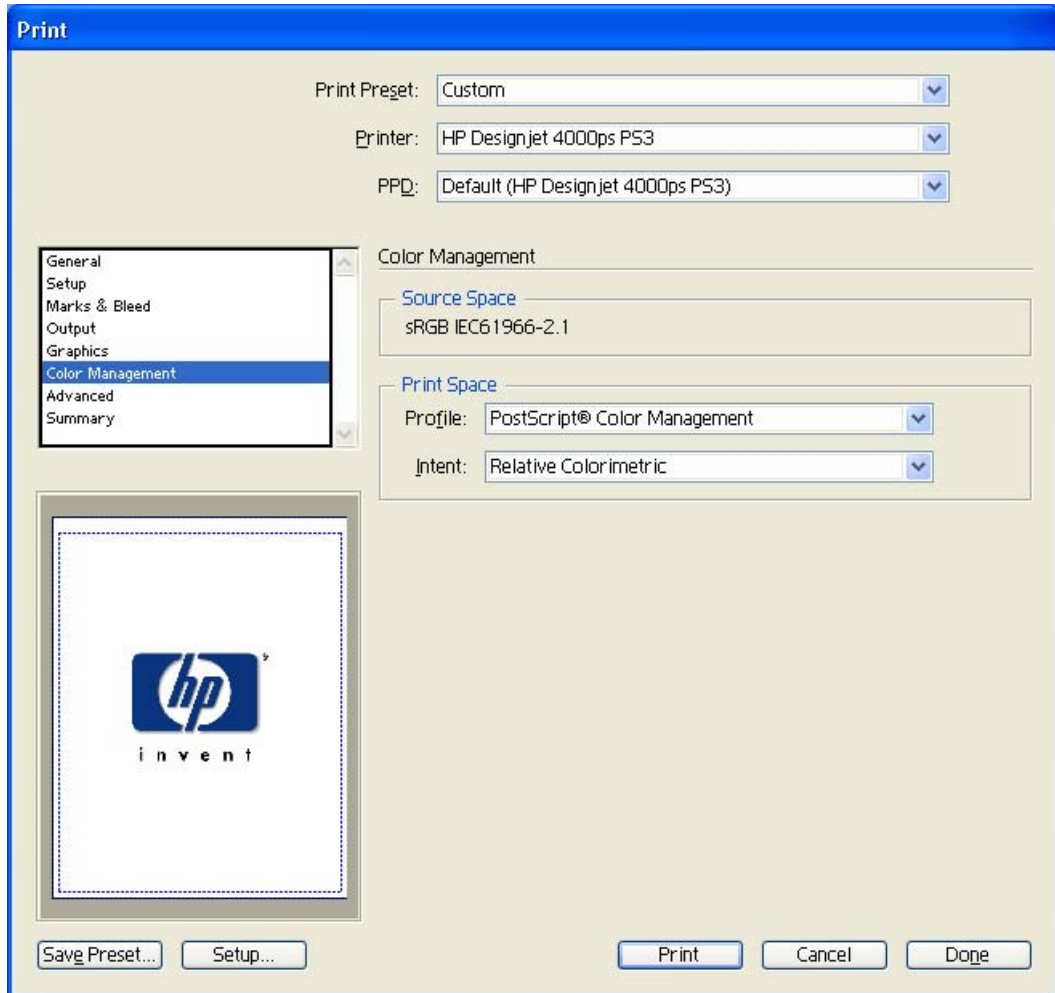
- **Orientation:** Select the orientation of your document on the paper.



- **Color Options** tab: You don't need to apply these settings because you are going to select the **PostScript Color Management** option in the application. The application tells the driver which source profile and rendering intent should be used for the conversion to the print space, these are the Source Space profile and the Print Space Intent in the application. The driver Input Profile and Rendering Intent will be overridden.
- Click **OK** until the Illustrator **Print** dialog box.

9. Adobe Illustrator **Print...** settings:

- **General** (left hand menu):
  - **Media > Size:** Defined by Driver.
  - **Options:** Select the scaling option you need.
- **Output** (left hand menu):
  - **Mode:** Composite.
- **Color Management** (left hand menu):
  - **Print Space > Profile:** PostScript Color Management
  - **Print Space > Intent:** Relative Colorimetric.



- Click **Print**.

