



Printing a drawing with right size and position

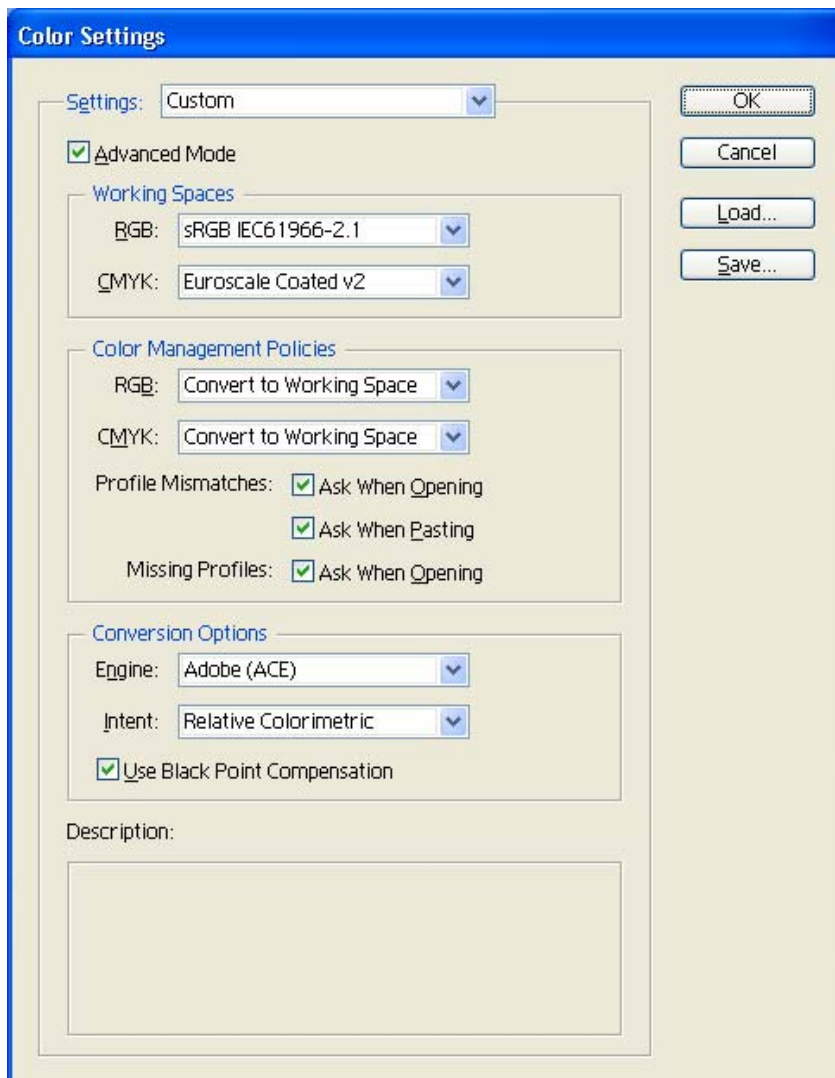
Application: Adobe Illustrator CS

Printer: HP Designjet 4000 series

Software: PS Driver

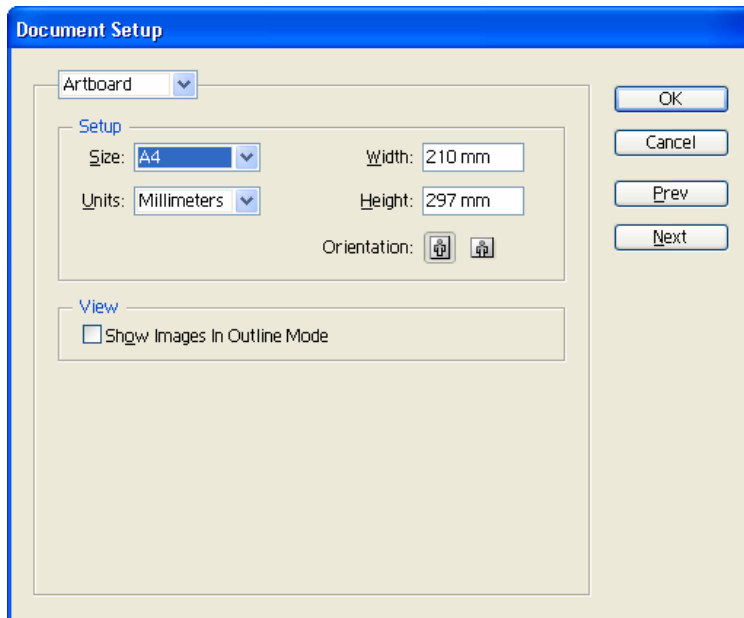
Operating System: Windows

1. First recommendations:
 - See the [Media type functionality & features](#) and choose the most appropriate media.
 - Ensure that the Paper Type setting on the front panel corresponds to the paper you intend to use. It is essential that the paper is correctly calibrated for the printer, consult the [Calibrate my printer](#) section.
2. Open Adobe Illustrator CS.
3. Configure the **Color Settings, Edit menu > Color Settings...**:
 - Make sure the **Advanced Mode** check box is ticked.
 - **Working Space > RGB**: sRGB IEC61966-2.1.
 - **Working Space > CMYK**: Euroscale Coated v2 (for Europe), U.S. Web Coated (SWOP) v2 (for US) and Japan Standard v2 (for Japan).
 - **Color Management Policies**: Convert to working space.
 - **Profile Mismatches**: check **Ask When Opening** and **Ask When Pasting**.
 - **Missing Profiles**: check **Ask When Opening**.
 - **Conversion Options > Intent**: Relative Colorimetric.

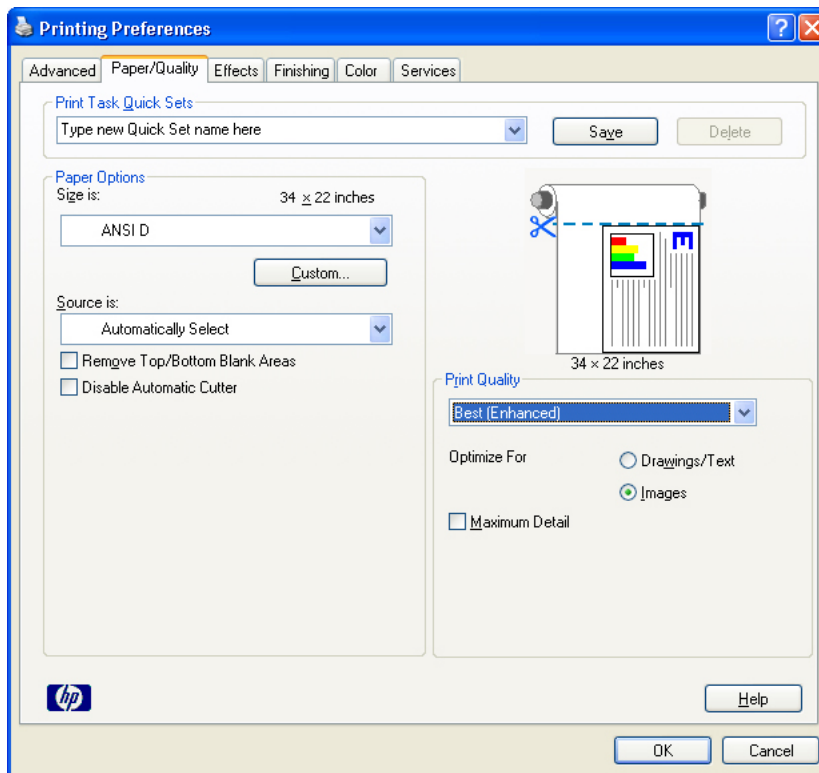


- Click **OK**.

4. Open the document, **File menu > Open...**:
 - If the document has an embedded color profile that does not match the current working space, select **Convert document's colors to the working space**. Otherwise, select **Assign working space**.
 - Click **OK**.
5. Make sure you have configured the **Document Setup** correctly for your document, **File menu > Document Setup...**
 - Select **Artboard**.
 - **Setup:** Select the document **Size** and the **Orientation** of your image on the document.

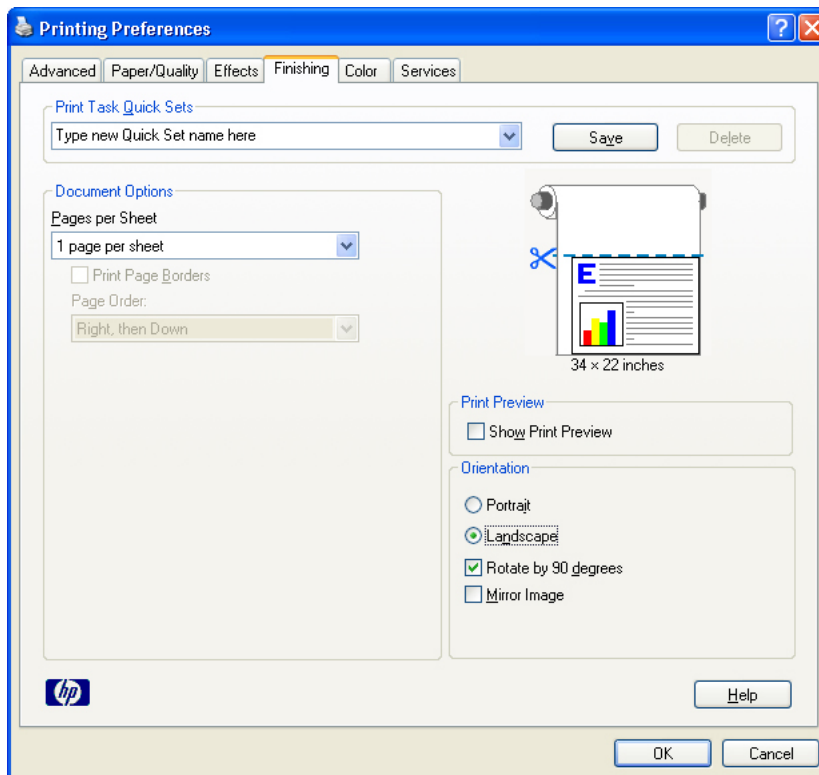


- Click **OK**.
6. Driver settings, **File menu > Print... > Setup...** button:
 - **Select Printer...:** Select the printer (ex. HP Designjet 4000ps PS3).
 - **Preferences:**
 - **Paper/Quality** tab:
 - **Size is:** select the desire paper size. You can select an oversize page size if each oversize page size is large enough to accommodate a standard paper size plus margins. You can create a **Custom Page Size** if you need. If you are using a roll, make sure that the paper size fits onto the roll.
 - **Print Quality:** Best (enhanced).
 - **Optimize for:** Images

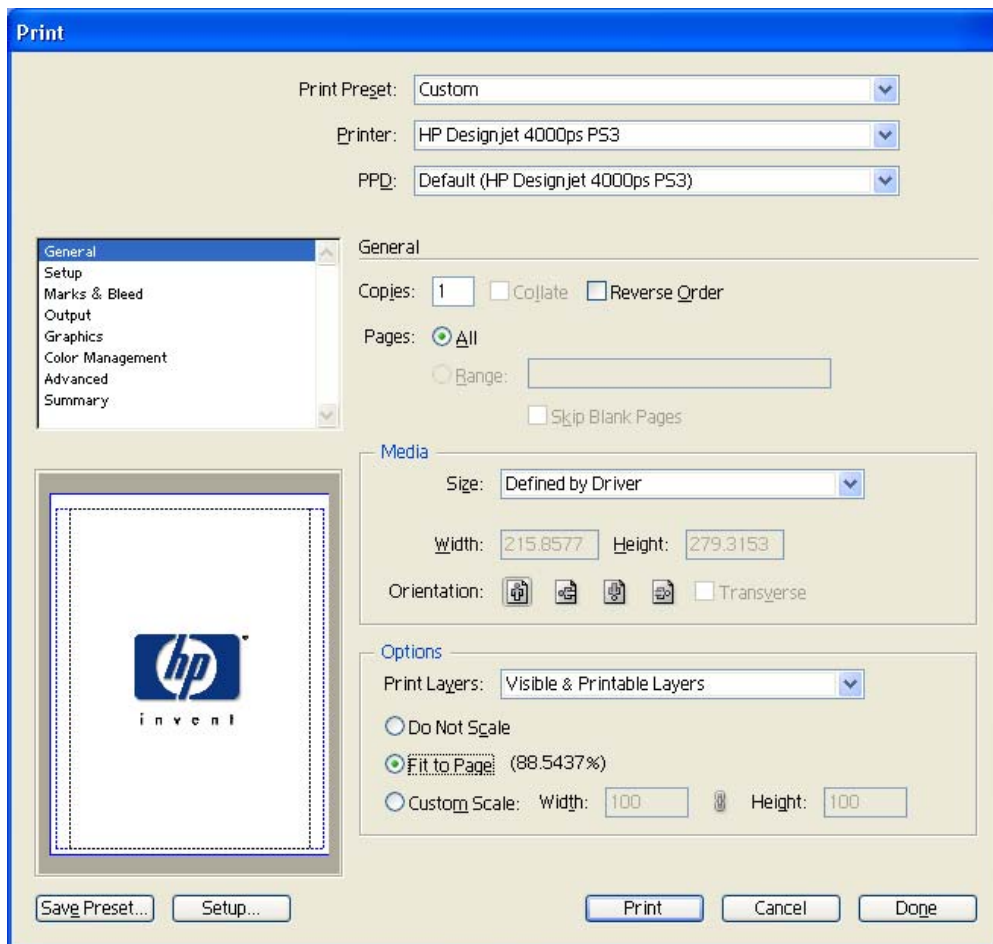


o **Finishing** tab:

- Check **Show Print Preview**.
- **Orientation:** Select the orientation of your document on the paper.
- You can check the **Rotate by 90 degrees**. If you are using a roll, make sure that the paper size can fit onto the roll.
- Check **Mirror Image** if you want to print onto a clear imaging paper (backlit).

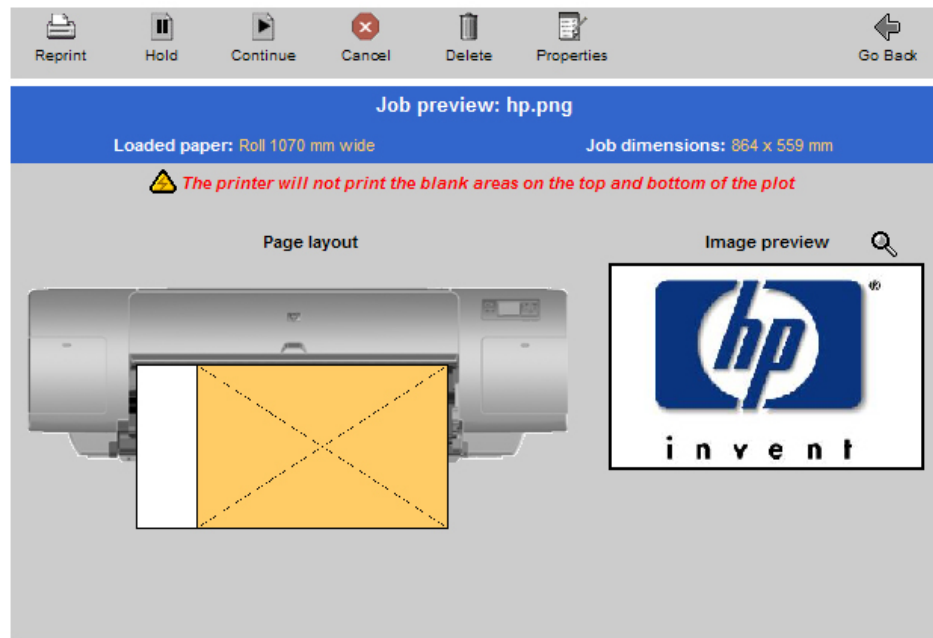


- **Color Options** tab: You don't need to apply these settings because you are going to select the **PostScript Color Management** option in the application. The application tells the driver which source profile and rendering intent should be used for the conversion to the print space, these are the Document profile and the Print Space Intent in the application. The driver Input Profile and Rendering Intent will be overridden.
 - Click **OK** until the Illustrator **Print** dialog box.
7. Adobe Illustrator **Print...** settings:
- **General** (left hand menu):
 - **Media > Size:** Defined by Driver.
 - **Options:** select the scaling size you need (make sure that the document size is not bigger than the page size). If you want to fit the document on the paper size, check **Fit to Page**.
 - **Setup** (left hand menu):
 - **Options > Placement:** if the document is smaller than the page size, select how to place the document on the paper.
 - **Output** (left hand menu):
 - **Mode:** Composite.
 - **Color Management** (left hand menu):
 - **Print Space > Profile:** PostScript Color Management
 - **Print Space > Intent:** Relative Colorimetric.



8. The **Print Preview** utility will appear, this enables you to view the layout of the document (Page layout and Image preview).

Job queue » Job preview



- If it is correct select **Continue**.

For more information on HP Designjet products

www.hp.com/go/designjet

© 2005 Hewlett-Packard Development Company, L.P. The information contained herein is subject to change without notice. The only warranties for HP products and services are set forth in the express warranty statements accompanying such products and services. Nothing herein should be construed as constituting an additional warranty. HP shall not be liable for technical or editorial errors or omissions contained herein.

Adobe Photoshop and PostScript are trademarks of Adobe Systems Incorporated. PANTONE is Pantone, Inc.'s check-standard trademark for color.

Rev. 1.0, 08/2005

