



Proof another printer

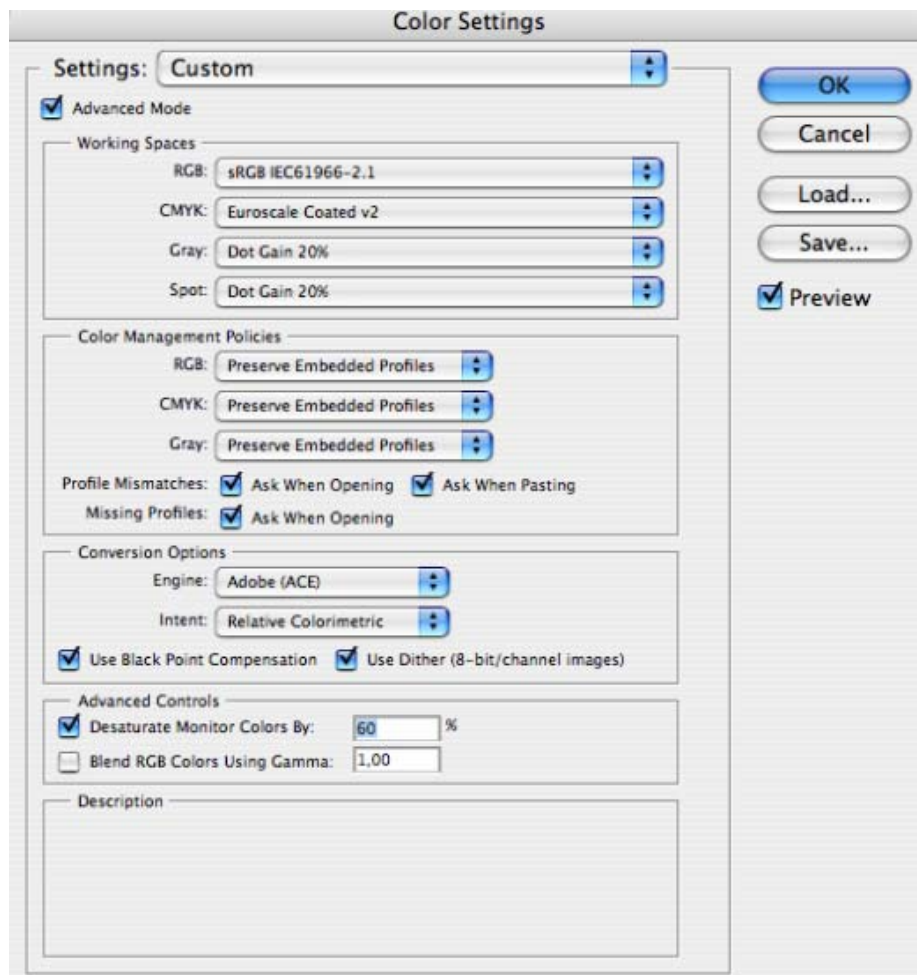
Application: Adobe Photoshop CS

Printer: HP Designjet 4000 series

Software: PS Driver

Operating System: Mac OS X

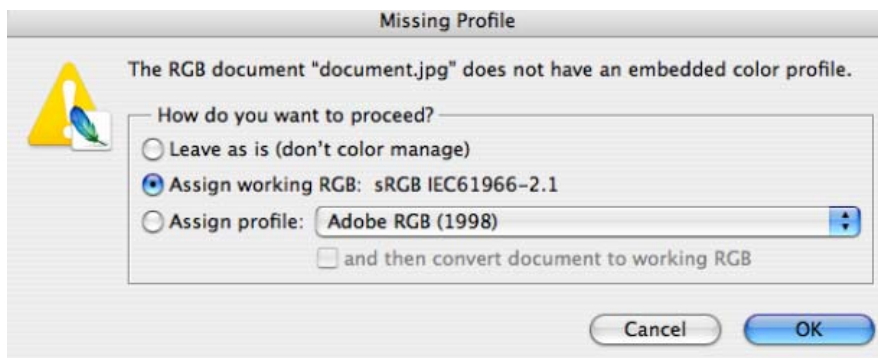
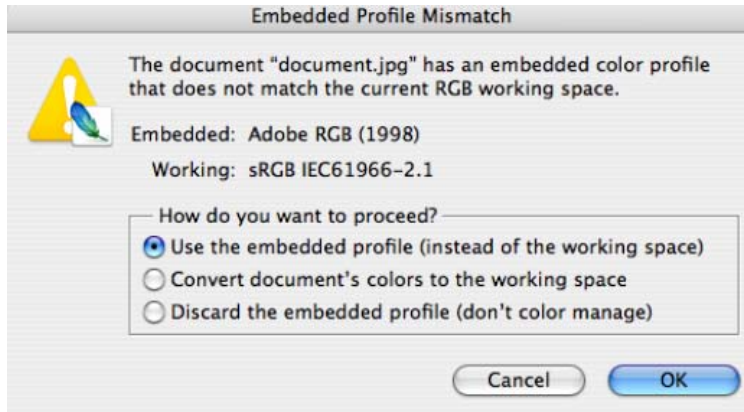
1. First recommendations:
 - Some paper types are better than others for proofing, see the [Media type functionality & features](#) and choose the most appropriate media.
 - Ensure that the Paper Type setting on the front panel corresponds to the paper you intend to use. It is essential that the paper is correctly calibrated for the printer, consult the [Calibrate my printer](#) section.
2. Open Adobe Photoshop CS.
3. Configure the **Color Settings, Photoshop menu > Color Settings...**:
 - Make sure the **Advanced Mode** check box is ticked.
 - **Working Space > RGB**: sRGB IEC61966-2.1.
 - **Working Space > CMYK**: Euroscale Coated v2 (for Europe), U.S. Web Coated (SWOP) v2 (for US) and Japan Standard v2 (for Japan).
 - **Color Management Policies**: Preserve the embedded profiles.
 - **Profile Mismatches**: check **Ask When Opening** and **Ask When Pasting**.
 - **Missing Profiles**: check **Ask When Opening**.
 - **Conversion Options > Intent**: Relative Colorimetric.



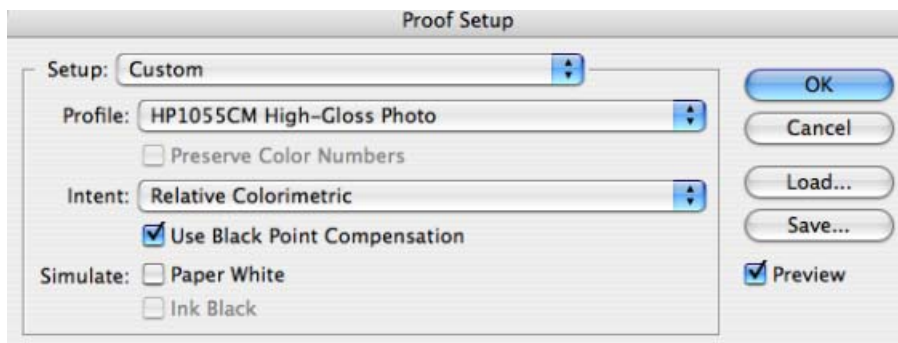
- Click **OK**.

4. Open the image, **File menu > Open...**:

- If the document has an embedded color profile that does not match the current working space, select **Use the embedded profile**. Otherwise, select **Assign working space**.



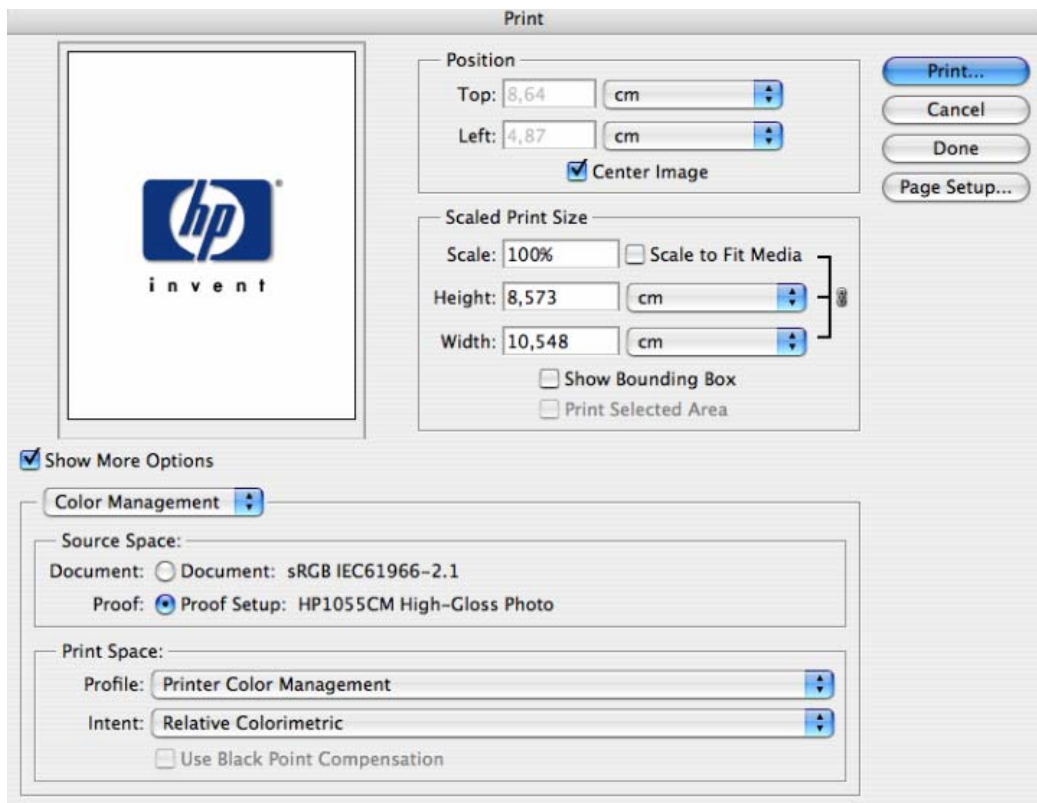
- Click **OK**.
6. Select your printer profile in the **Proof Setup** dialog box, **View Menu > Proof Setup > Custom...**:
- **Profile:** Select the printer profile (generally, it depends on the printer model, the media type and the print mode). If you don't have it on the list, you should copy it into this folder: */Library/ColorSync/Profiles*.
 - **Intent:** Perceptual (for RGB images) or Relative Colorimetric (for CMYK images).
 - Check **Black Point Compensation**.
 - **Simulate > Paper White:** This setting only affects the display, check it if you want to emulate the white of the paper.



- Click **OK**.

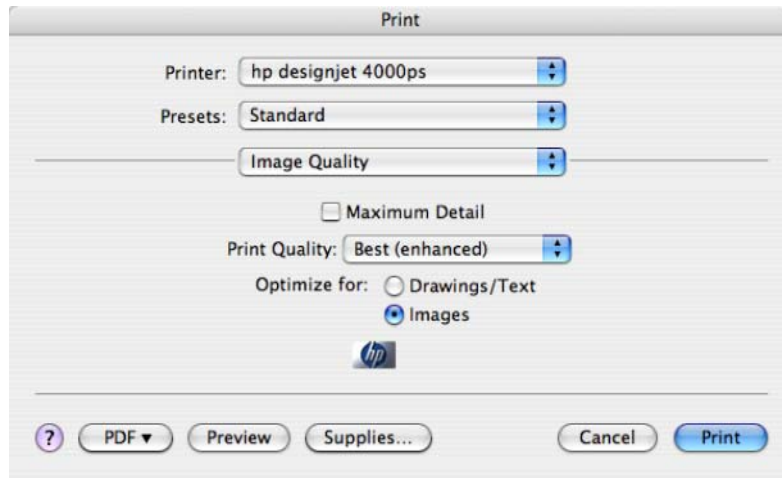
5. Adobe Photoshop **Print with Preview...** settings. **File menu > Print with Preview...**:

- **Page Setup...**
 - **Format for...**: Select the printer (ex. HP Designjet 4000ps PS3).
 - **Paper Size**: Select the desired paper size.
 - **Orientation**: Select the orientation of your image on the paper.
 - Click **OK**.
- Set the **Position** and the **Scaled Print Size** you need.
- Check **Show More Options**.
- Select the **Color Management** tab:
 - **Source Space**: Proof.
 - **Print Space > Profile**: Printer Color Management.
 - **Print Space > Intent**: Relative Colorimetric (select Absolute Colorimetric if you want to emulate the white of the paper).



6. Driver Settings, **Print...**:

- **Printer**: Select the printer (ex. HP Designjet 4000ps PS3).
- **Image Quality** tab:
 - **Print Quality**: Best (enhanced).
 - **Optimize for**: Images



- **Color Options** tab: You don't need to apply these settings because you have selected the **Printer Color Management** option in the application. The application tells the driver which source profile and rendering intent should be used for the conversion to the print space, these are the Document profile and the Print Space Intent in the application. The driver Input Profile and Rendering Intent will be overridden.
- Click **Print**.

For more information on HP Designjet products

www.hp.com/go/designjet

© 2005 Hewlett-Packard Development Company, L.P. The information contained herein is subject to change without notice. The only warranties for HP products and services are set forth in the express warranty statements accompanying such products and services. Nothing herein should be construed as constituting an additional warranty. HP shall not be liable for technical or editorial errors or omissions contained herein.

Adobe Photoshop and PostScript are trademarks of Adobe Systems Incorporated. PANTONE is Pantone, Inc.'s check-standard trademark for color.

Rev. 1.0, 09/2005

