



## Printing a drawing with right size and position

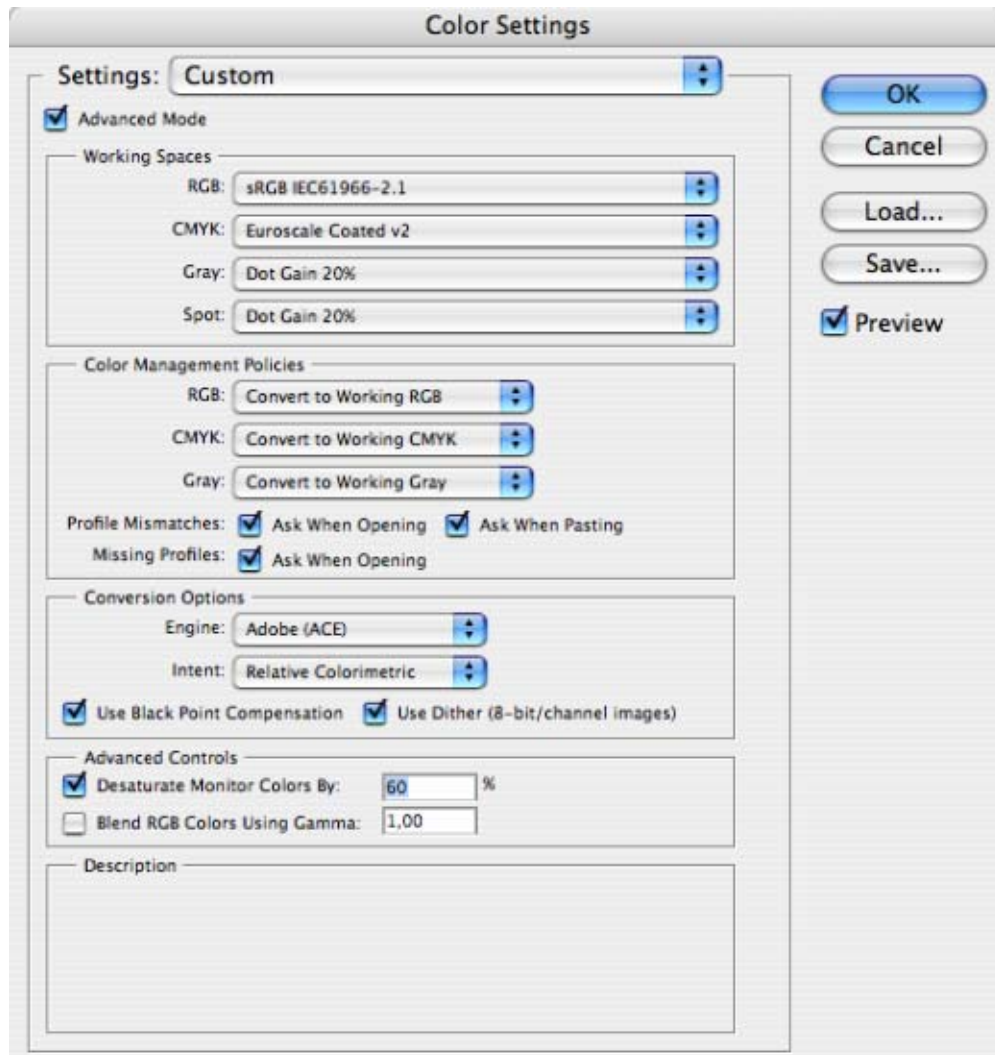
Application: Adobe Photoshop CS

Printer: HP Designjet 4000 series

Software: PS Driver

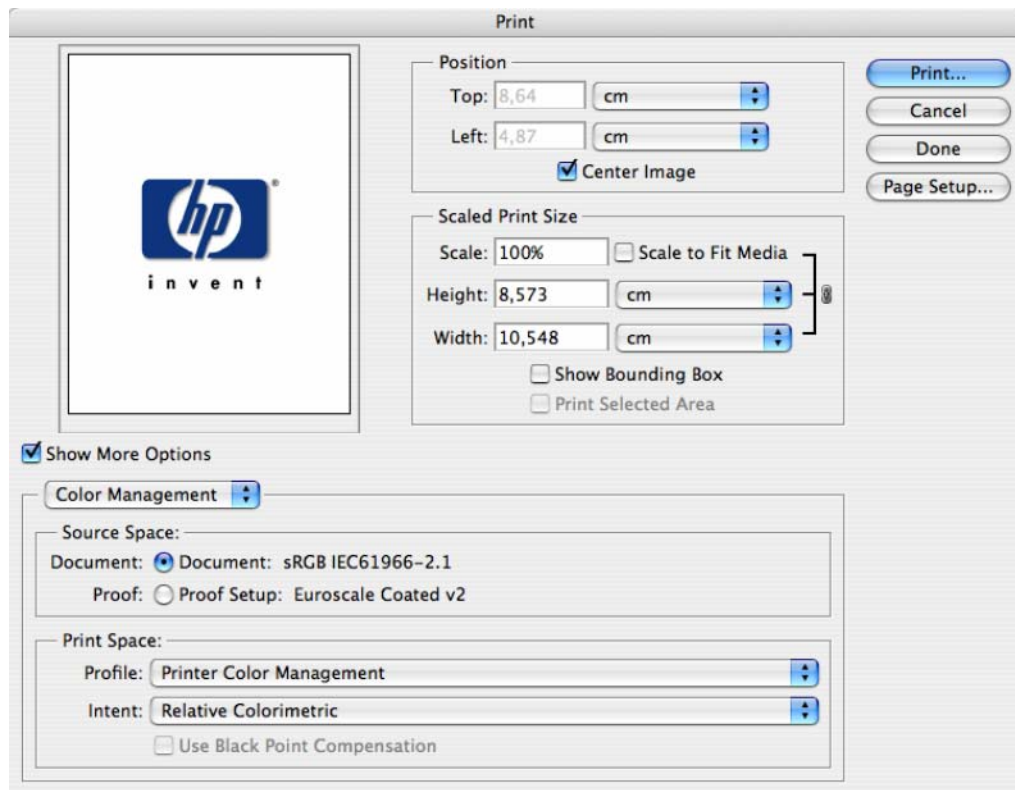
Operating System: Mac OS X

1. First recommendations:
  - See the [Media type functionality & features](#) and choose the most appropriate media.
  - Ensure that the Paper Type setting on the front panel corresponds to the paper you intend to use. It is essential that the paper is correctly calibrated for the printer, consult the [Calibrate my printer](#) section.
2. Open Adobe Photoshop CS.
3. Configure the **Color Settings, Photoshop menu > Color Settings...**:
  - Make sure the **Advanced Mode** check box is ticked.
  - **Working Space > RGB**: sRGB IEC61966-2.1.
  - **Working Space > CMYK**: Euroscale Coated v2 (for Europe), U.S. Web Coated (SWOP) v2 (for US) and Japan Standard v2 (for Japan).
  - **Color Management Policies**: Convert to working space.
  - **Profile Mismatches**: check **Ask When Opening** and **Ask When Pasting**.
  - **Missing Profiles**: check **Ask When Opening**.
  - **Conversion Options > Intent**: Relative Colorimetric.



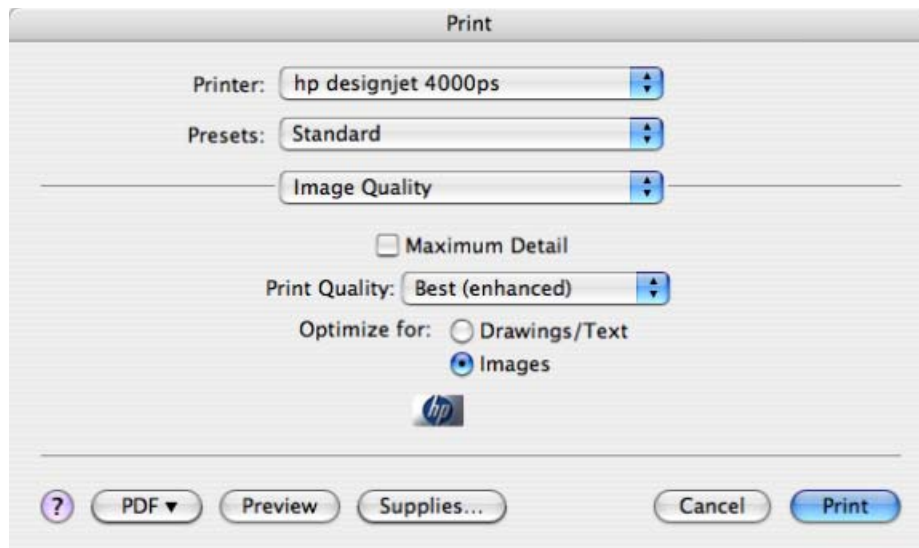
- Click **OK**.

4. Open the image, **File menu > Open...**:
  - If the document has an embedded color profile that does not match the current working space, select **Convert document's colors to the working space**. Otherwise, select **Assign working space**.
  - Click **OK**.
5. Adobe Photoshop **Print with Preview...** settings. **File menu > Print with Preview...**:
  - **Page Setup...**:
    - **Format for...**: Select the printer (ex. HP Designjet 4000ps PS3).
    - **Paper Size**: select the desired paper size. You can select an oversize page size; if each oversize page size is large enough to accommodate a standard paper size plus margins. You can create a **Custom Page Size** if you need. If you are using a roll, take care that the paper size fits into the roll.
    - **Orientation**: Select the orientation of your image on the paper.
    - Click **OK**.
  - **Scaled Print Size**: select the scaling size you need (make sure that the image size is not bigger than the page size). If you want to fit the image on the paper size, check **Scale to Fit Media**.
  - **Position**: if the image is smaller than the page size, select how to place the image on the paper
  - Check **Show More Options**.
  - Select the **Color Management** tab:
    - **Source Space**: Document.
    - **Print Space > Profile**: Printer Color Management.
    - **Print Space > Intent**: Relative Colorimetric.

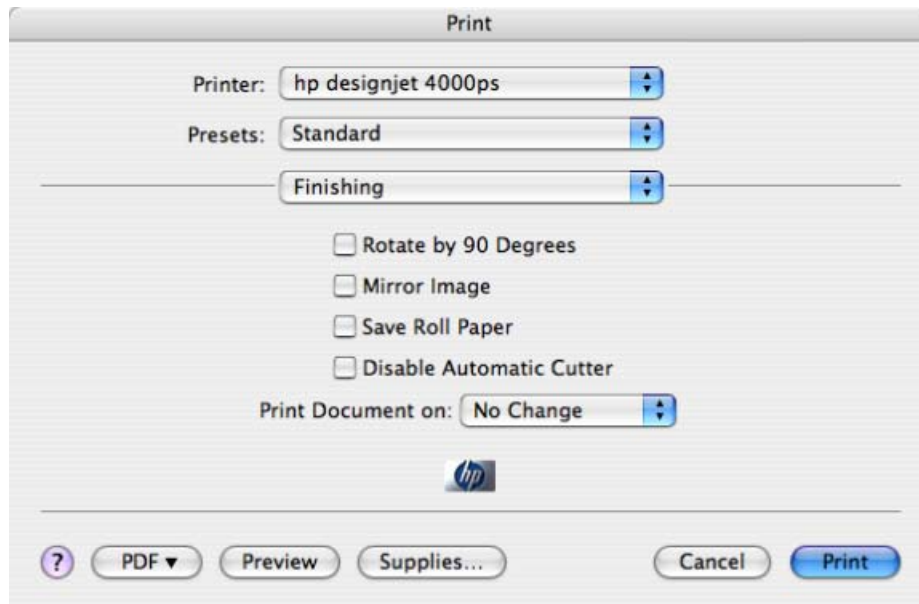


6. Driver Settings, **Print...**:

- **Printer:** Select the printer (ex. HP Designjet 4000ps PS3).
- **Image Quality** tab:
  - **Print Quality:** Best (enhanced).
  - **Optimize for:** Images

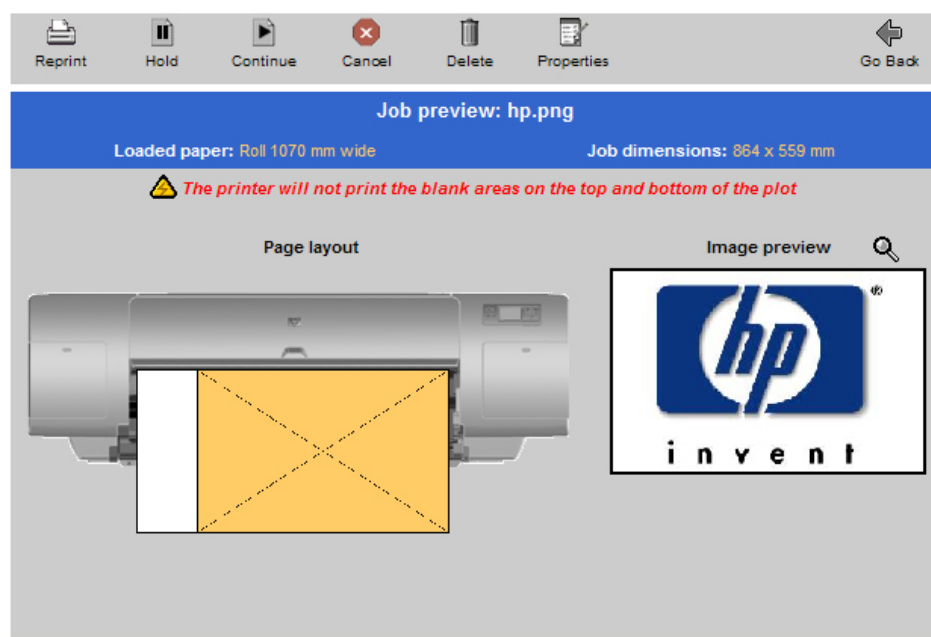


- **Finishing** tab:
  - You can check the **Rotate by 90 degrees**. If you are using a roll, make sure that the paper size fits into the roll.
  - Check **Mirror Image** if you want to print onto a clear imaging paper (backlit).



- **Services** tab: check **Show Print Preview**.
  - **Color Options** tab: You don't need to apply these settings because you have selected the **Printer Color Management** option in the application. The application tells the driver which source profile and rendering intent should be used for the conversion to the print space, these are the Document profile and the Print Space Intent in the application. The driver Input Profile and Rendering Intent will be overridden.
  - Click **Print**.
7. The **Print Preview** utility will appear, this enables you to view the layout of the document (Page layout and Image preview).

### Job queue » Job preview



- If it is correct select **Continue**.

# For more information on HP Designjet products

[www.hp.com/go/designjet](http://www.hp.com/go/designjet)

© 2005 Hewlett-Packard Development Company, L.P. The information contained herein is subject to change without notice. The only warranties for HP products and services are set forth in the express warranty statements accompanying such products and services. Nothing herein should be construed as constituting an additional warranty. HP shall not be liable for technical or editorial errors or omissions contained herein.

Adobe Photoshop and PostScript are trademarks of Adobe Systems Incorporated. PANTONE is Pantone, Inc.'s check-standard trademark for color.

Rev. 1.0, 09/2005

