



Printing a “match to screen”

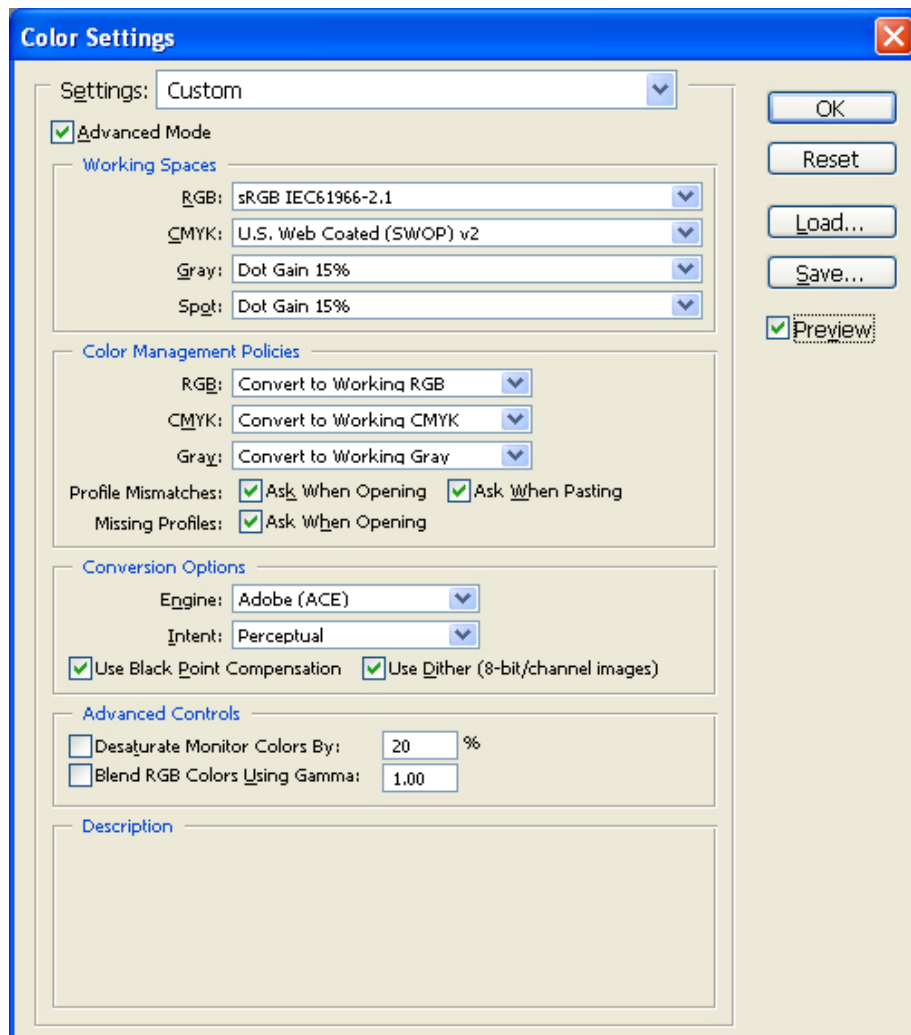
Application: Adobe Photoshop CS2

Printer: HP Designjet Z2100 series

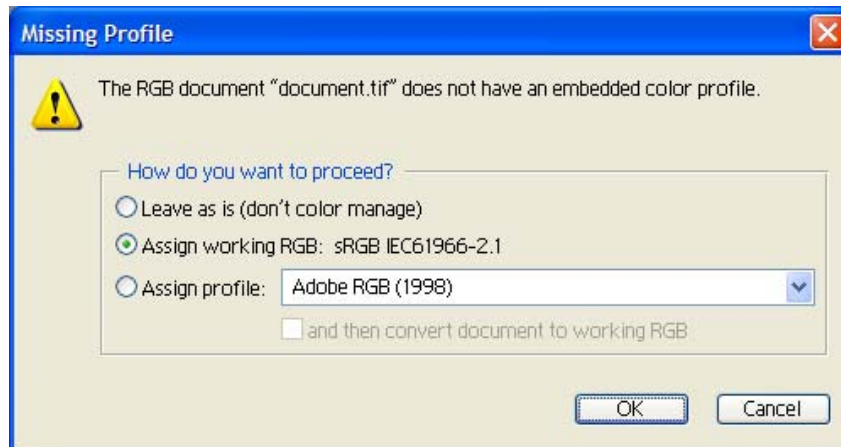
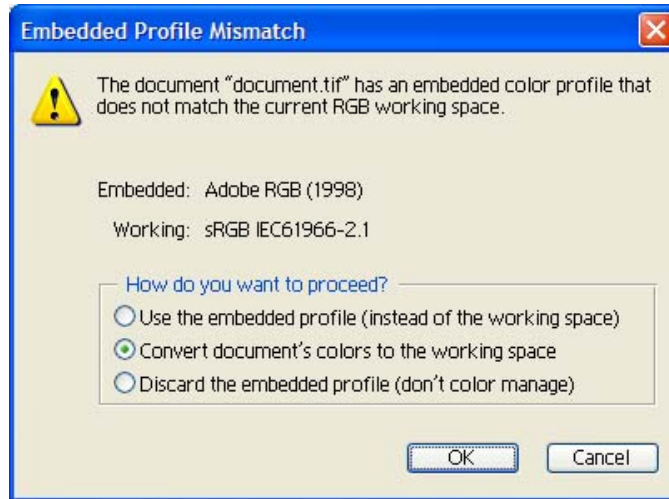
Software: HP raster driver

Operating System: Windows

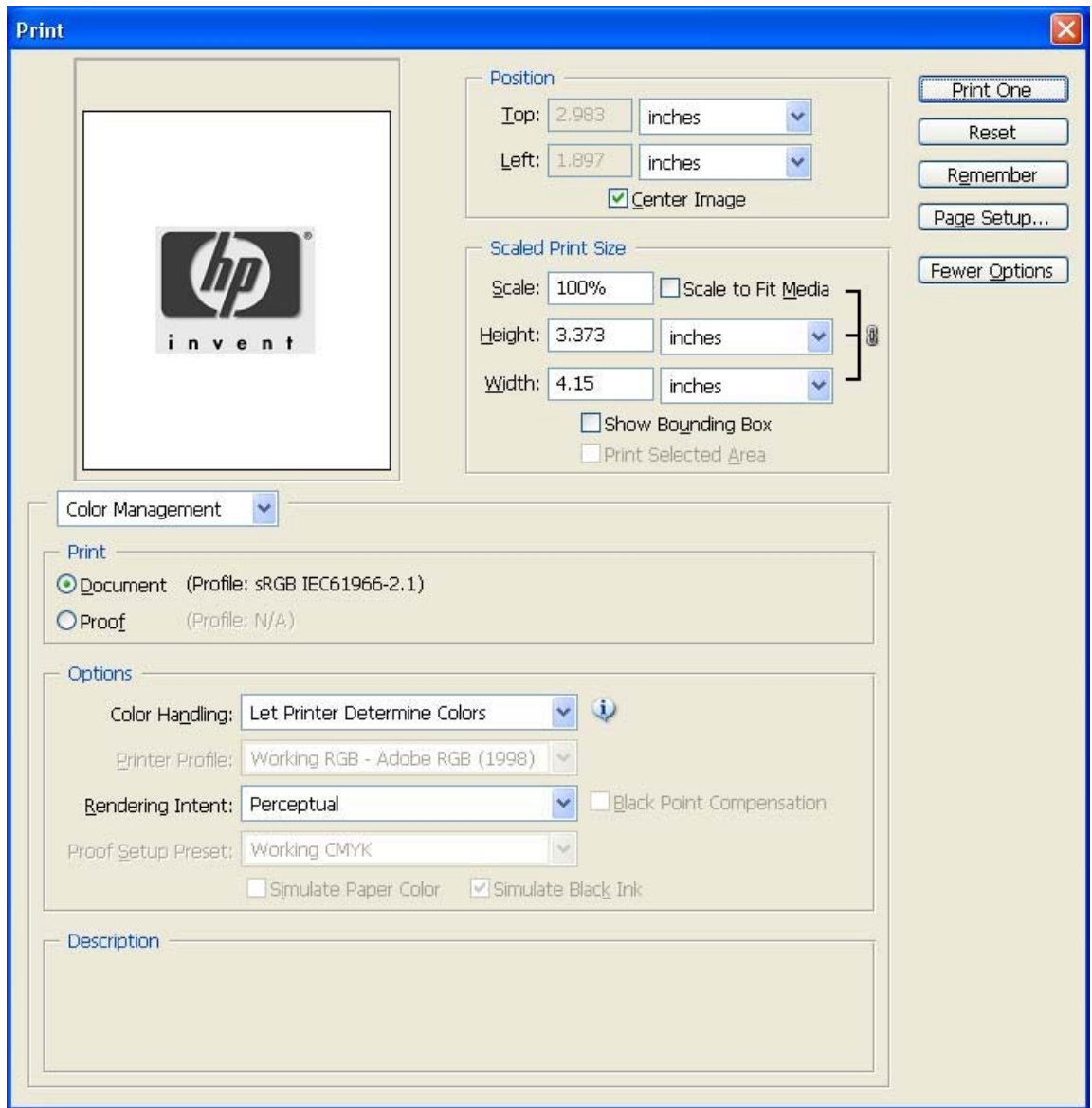
1. First recommendations:
 - See the [Media type functionality & features](#) and choose the most appropriate media.
 - It is essential you have the media type correctly calibrated with the printer and print mode, consult the [Calibrate my printer](#) document.
 - In order to get a correct display, it's also essential you have the monitor calibrated, consult the [Profile my monitor](#) section.
2. Open Adobe Photoshop CS2.
3. Configure the **Color Settings, Edit menu > Color Settings...**:
 - Make sure the **More Options** are displayed.
 - **Working Space > RGB**: Select the profile of the scanner or camera that you have used to get the photo (source profile), if you do not have it, select Adobe RGB (1998).
 - **Working Space > CMYK**: Euroscale Coated v2 (for Europe), U.S. Web Coated (SWOP) v2 (for US) and Japan Standard v2 (for Japan).
 - **Color Management Policies**: Preserve Embedded Profiles.
 - **Profile Mismatches**: Check **Ask When Opening** and **Ask When Pasting**.
 - **Missing Profiles**: Check **Ask When Opening**.
 - **Conversion Options > Intent**: Perceptual.



- Click **OK**.
4. Open the image, **File menu > Open...**:
- If the document has an embedded color profile that does not match the current working space, select **Convert document's colors to the working space**. Otherwise, select **Assign working space**.



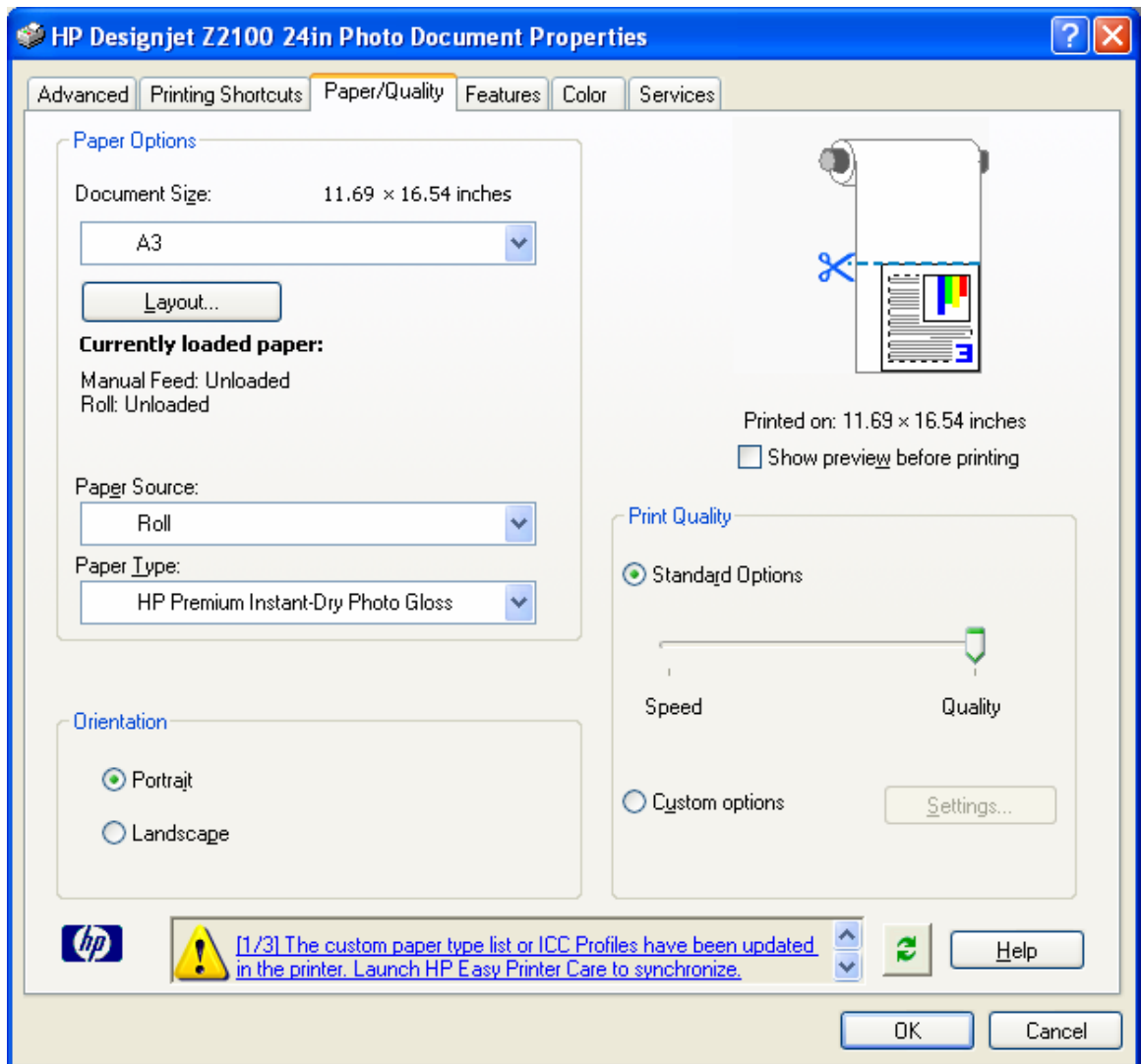
- Click **OK**.
5. Adobe Photoshop **Print with Preview...** settings. **File menu > Print with Preview...**:
- **Page Setup:**
 - **Printer...**: Select the printer (ex. HP Designjet Z2100 24in Photo) and click **OK**.
 - **Paper Size**: Select the paper size of the media loaded on the printer.
 - **Orientation**: Select the orientation of your image on the paper.
 - Click **OK**.
 - Set the **Position** and the **Scaled Print Size** that you need.
 - Make sure the **More Options** are displayed.
 - Select the **Color Management** tab:
 - **Print**: Document.
 - **Options > Color Handling**: Let Printer Determine Colors.
 - **Options > Rendering Intent**: Perceptual.



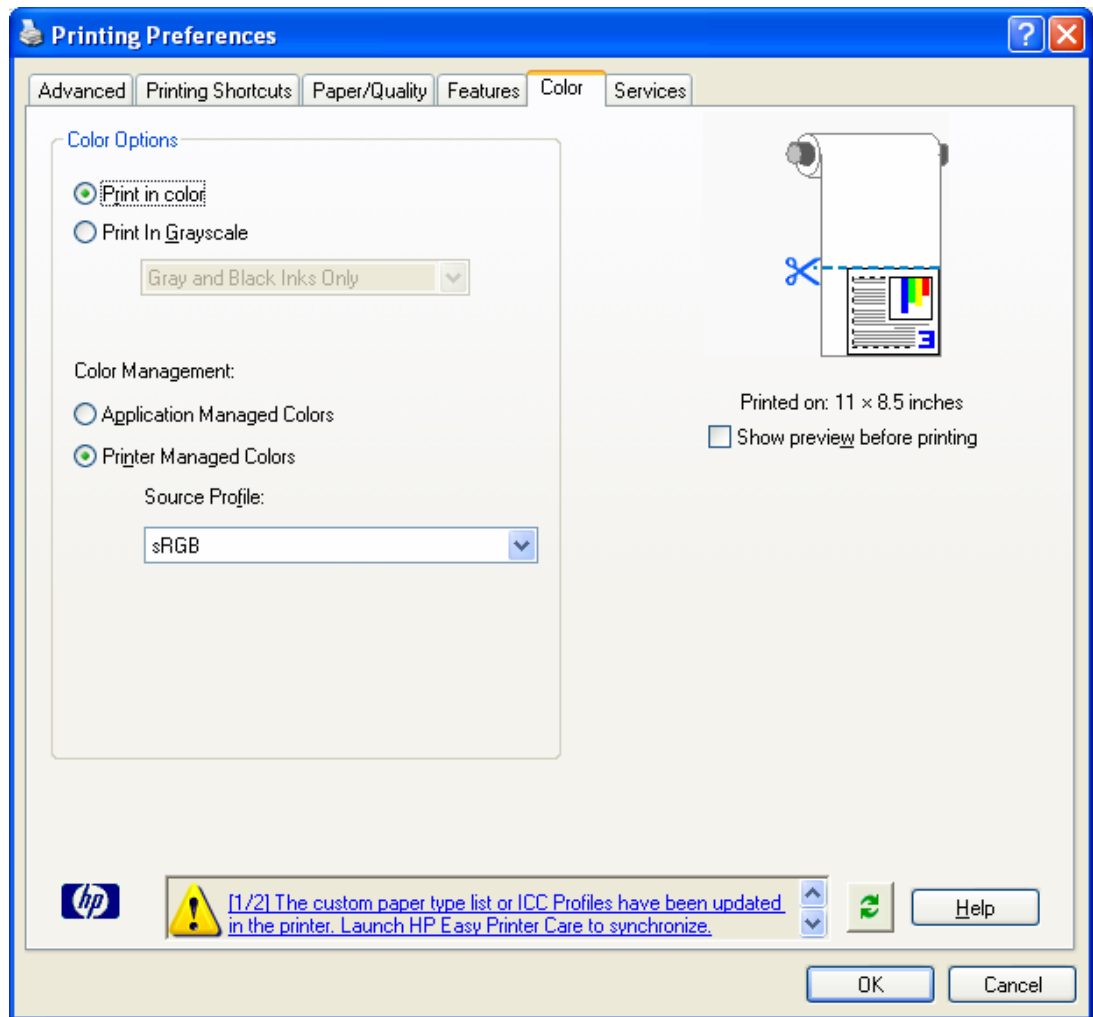
6. Driver Settings; **Properties** button:

- **Paper/Quality** tab:

- **Paper Type:** Select the media type that is loaded on the printer.
- **Print Quality:** Select **Standard Options** and drag the slider to **Quality**.



- **Color** tab:
 - Select **Print in Color**.
 - Select **Printer Managed Colors: sRGB**



Click **OK** twice.

You should consider that each person has their own perception and their own subjective opinion about the result; this is because there are various factors that can influence our opinions, such as the type of photo (portrait, landscape...), the source color space, the media used, the environmental conditions, the subjective perception about your own photo, etc.... This means that the printing suggestion may not completely match with your own personal opinion.

For more information on HP Designjet products

www.hp.com/go/designjet

© 2006 Hewlett-Packard Development Company, L.P. The information contained herein is subject to change without notice. The only warranties for HP products and services are set forth in the express warranty statements accompanying such products and services. Nothing herein should be construed as constituting an additional warranty. HP shall not be liable for technical or editorial errors or omissions contained herein.

Adobe Photoshop and PostScript are trademarks of Adobe Systems Incorporated. PANTONE is Pantone, Inc.'s check-standard trademark for color.

Rev. 1.0, 09/2006

