



Proof the output on the monitor

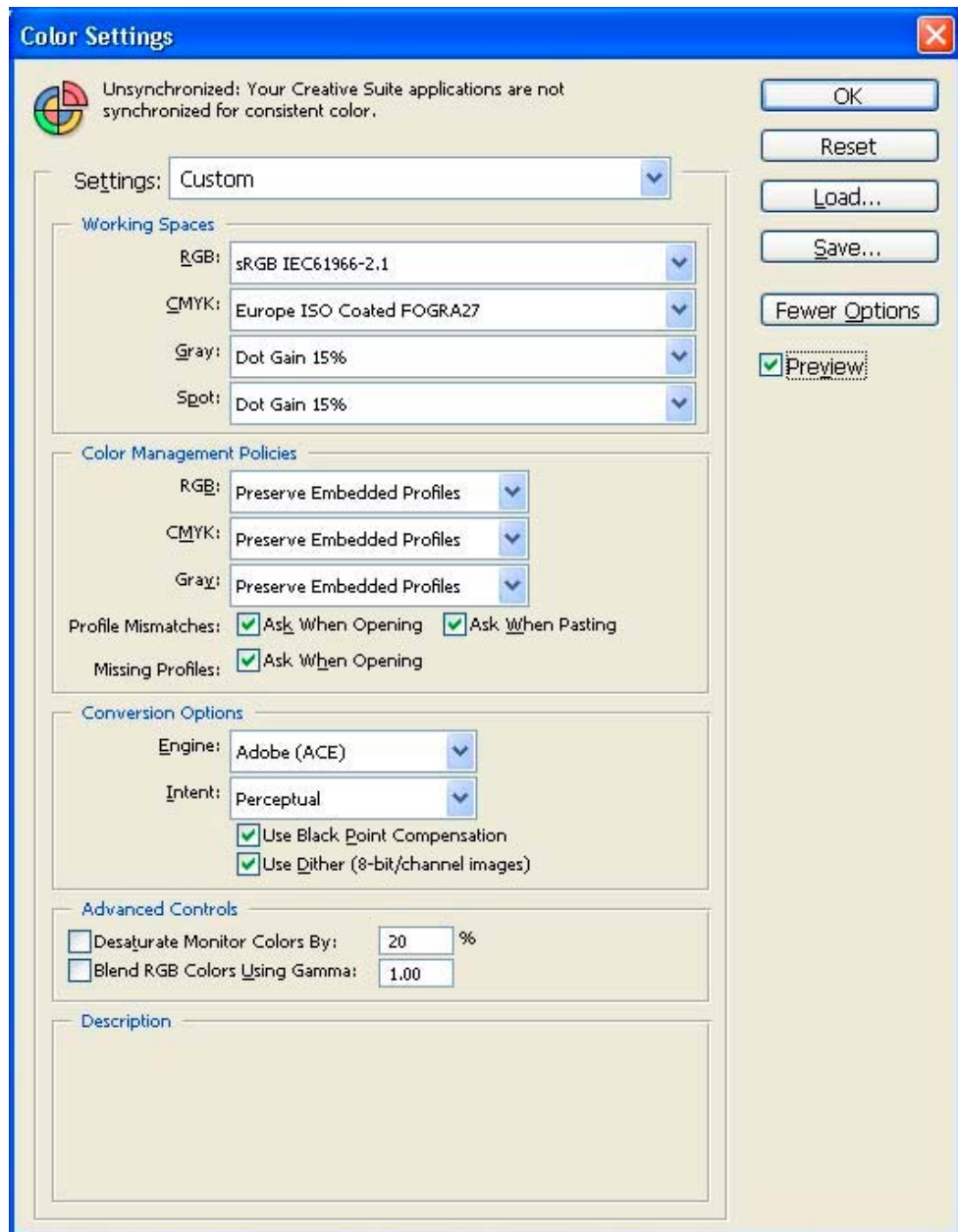
Application: Adobe Photoshop CS2

Printer: HP Designjet Z2100 series

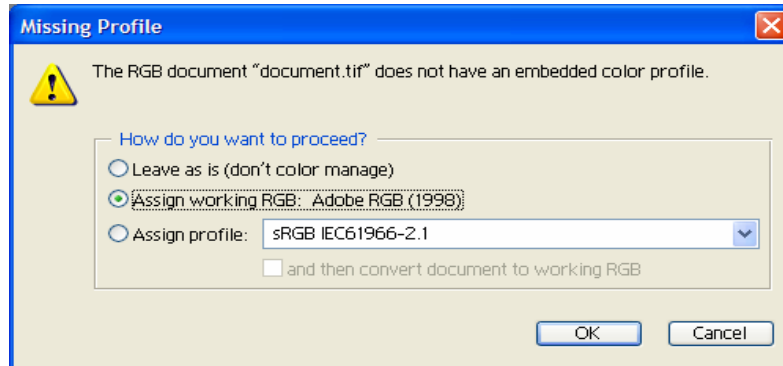
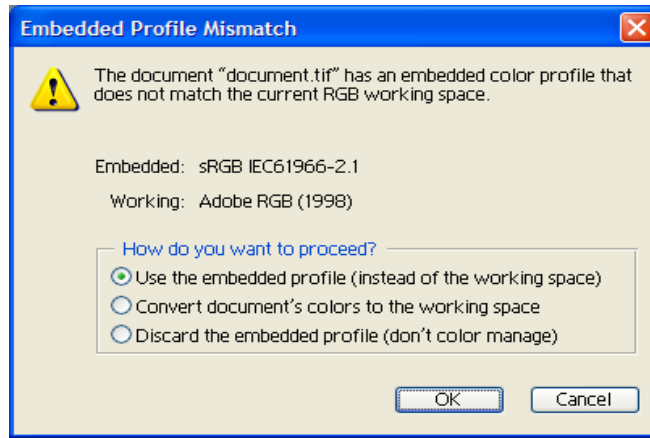
Software: HP raster driver

Operating System: Windows

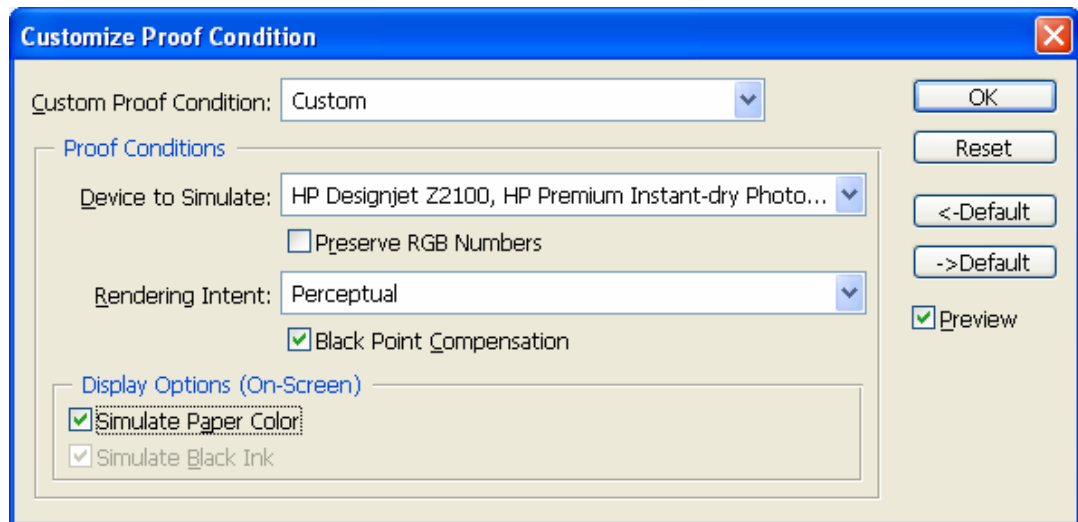
1. First recommendations:
 - See the [Media type functionality & features](#) and choose the most appropriate media.
 - It is essential you have the media type correctly calibrated with the printer and print mode, consult the [Calibrate my printer](#) document.
 - In order to get a correct display, it's also essential you have the monitor calibrated, consult the [Profile my monitor](#) document.
2. Open Adobe Photoshop CS2.
3. Configure the **Color Settings, Edit menu > Color Settings...**:
 - Make sure the **More Options** are displayed.
 - **Working Space > RGB**: Select the profile of the scanner or camera that you have used to get the photos (source profile), if you don't have it, select Adobe RGB (1998).
 - **Working Space > CMYK**: Euroscale Coated v2 (for Europe), U.S. Web Coated (SWOP) v2 (for US) and Japan Standard v2 (for Japan).
 - **Color Management Policies**: Preserve Embedded Profiles.
 - **Profile Mismatches**: Check **Ask When Opening** and **Ask When Pasting**.
 - **Missing Profiles**: Check **Ask When Opening**.
 - **Conversion Options > Intent**: Perceptual (for RGB images) or Relative Colorimetric (for CMYK images).



- Click **OK**.
4. Open the image, **File menu > Open...**:
- If the document has an embedded color profile that does not match the current working space, select **Use the embedded profile**. Otherwise, select **Assign working space**.

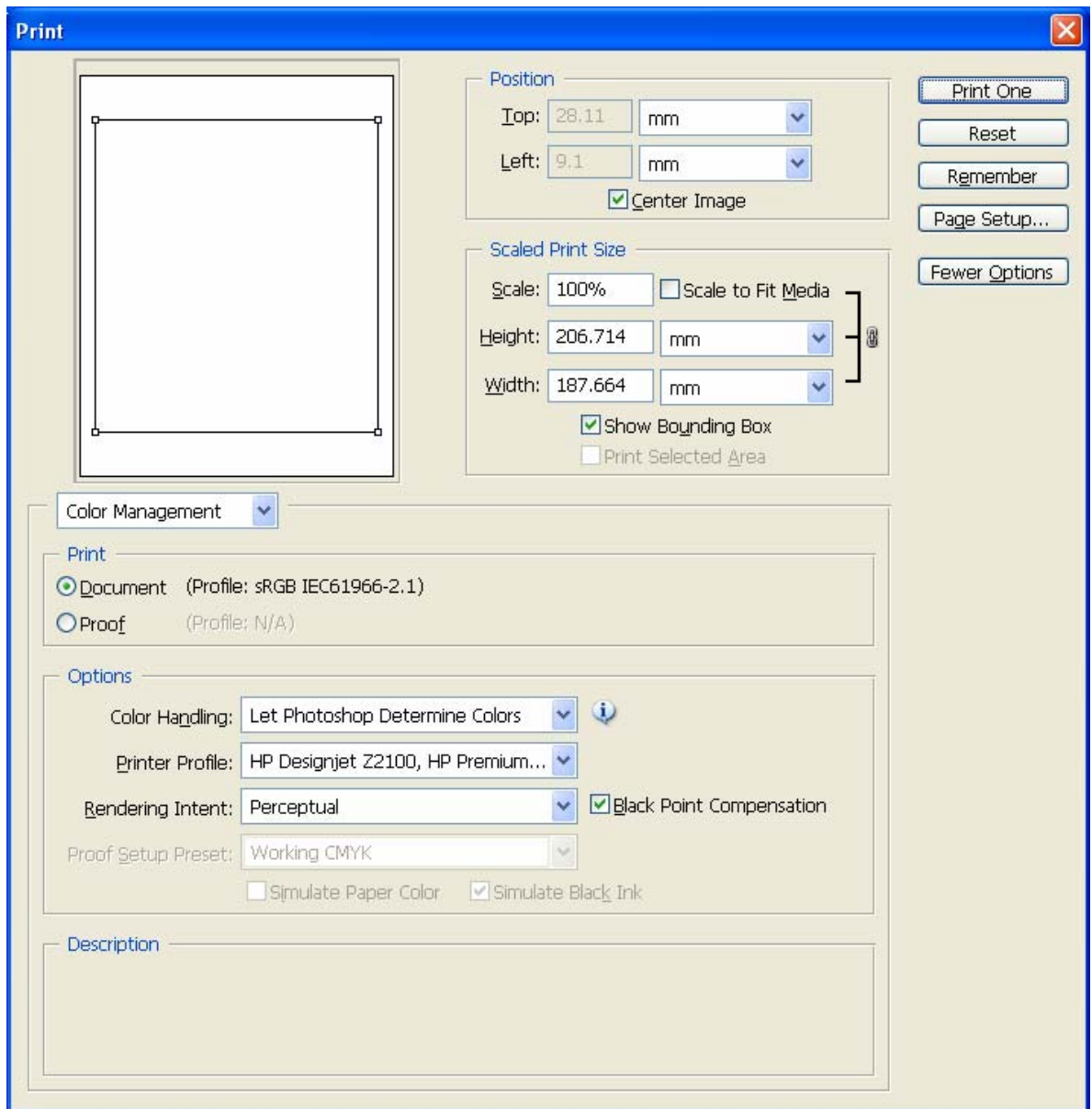


- Click **OK**.
5. Configure the **Proof Setup** dialog box in order to proof the output on the monitor, **View Menu > Proof Setup > Custom...**:
- **Device to Simulate:** Select the profile of the output device you want to proof; printer profile generally depends on the printer model and the media type. If you don't have it on the list, you should copy it from the next folder:
Windows 98: WINDOWS>System>Color
Windows NT: WinNT>System32>Color
Windows 2000: C: > WINDOWS > System32 > Spool > Drivers > Color
Windows XP: C: > WINDOWS > System32 > Spool > Drivers > Color
 - **Rendering Intent:** Perceptual (for RGB images) or Relative Colorimetric (for CMYK images).
 - Check **Black Point Compensation**.
 - **Simulate Paper Color:** Check it if you want to emulate the white of the paper.



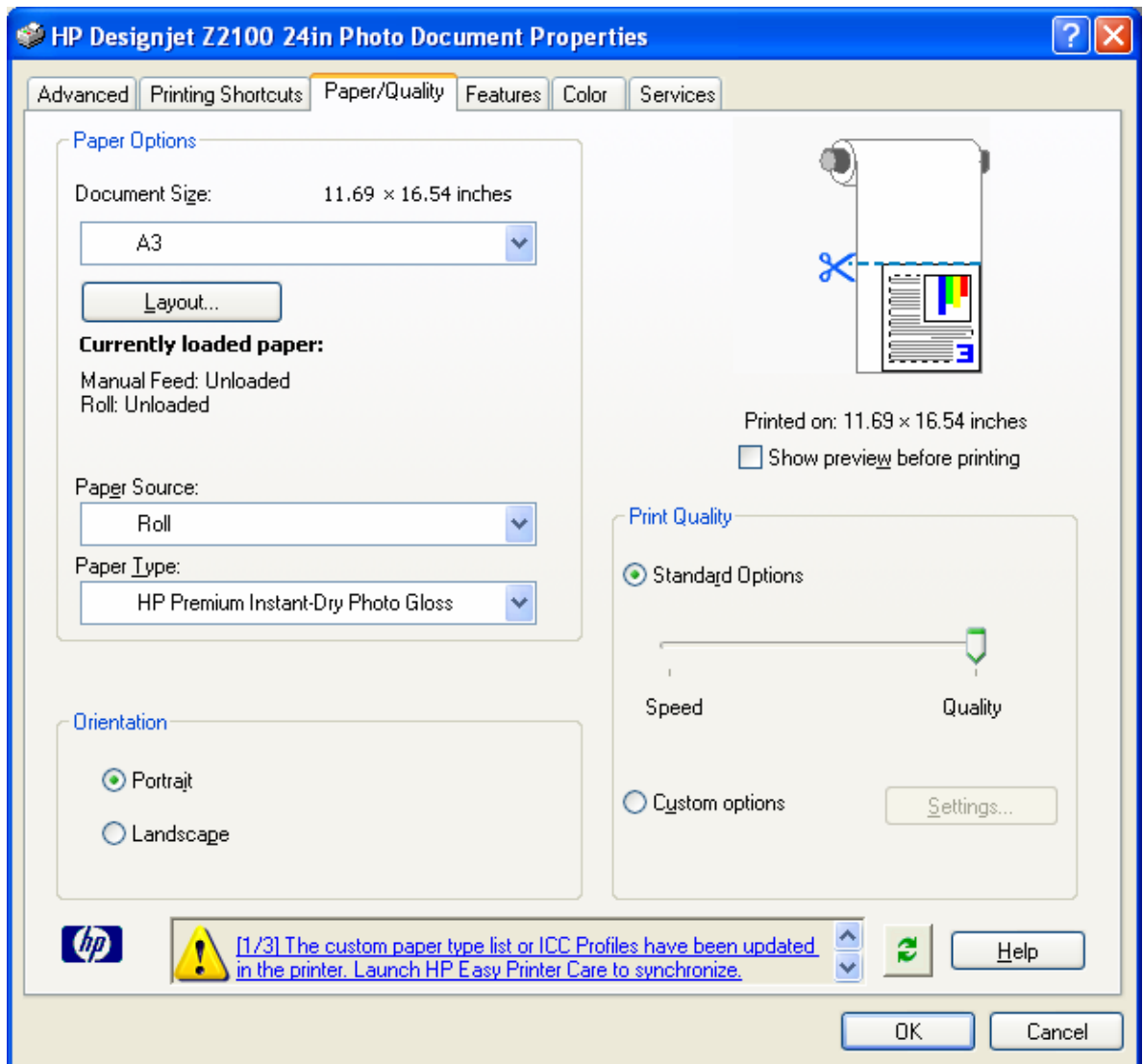
Click **OK**.

- Now, you can retouch your image and the monitor will show you how it's going to look once you've printed it.
6. Adobe Photoshop **Print with Preview...** settings, **File menu > Print with Preview...**:
- **Page Setup...**:
 - **Printer...**: Select the printer (ex. HP Designjet Z2100 24in Photo) and click **OK**.
 - **Paper Size**: Select the paper size of the media loaded on the printer.
 - **Orientation**: Select the orientation of your image on the paper.
 - Click **OK**.
 - Set the **Position** and the **Scaled Print Size** you need.
 - Select the **Color Management** tab:
 - **Print**: Document.
 - **Options > Color Handling**: Let Photoshop Determine Colors.
 - **Options > Printer profile**: Select the profile of the printer and media type that you will use to print, it should be the same as selected in the **Proof Setup** dialog box.
 - **Options > Rendering Intent**: Perceptual (for RGB images) or Relative Colorimetric (for CMYK images), it should be the same as selected in the **Proof Setup** dialog box.

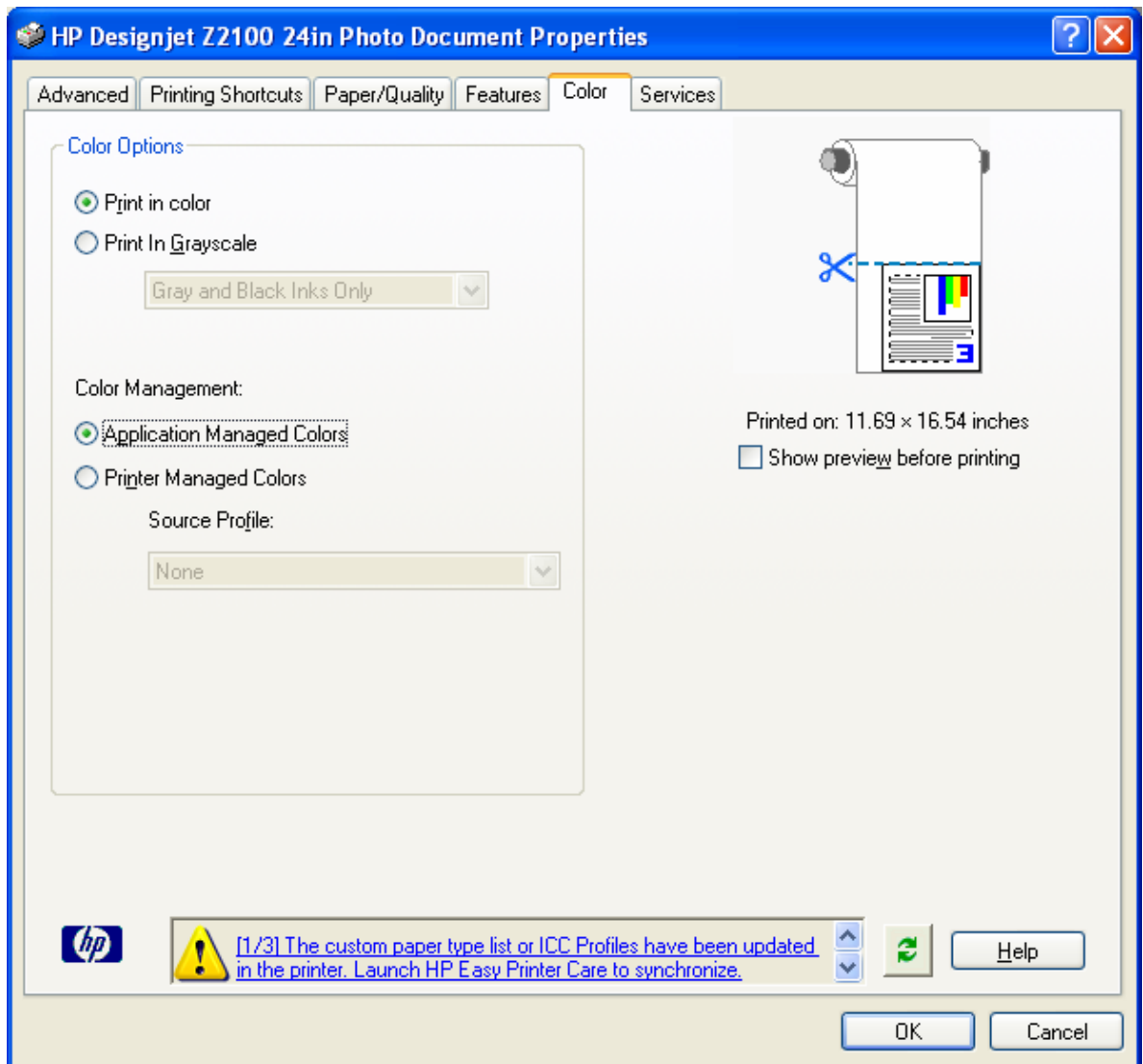


7. Driver Settings; **Properties** button:

- **Paper/Quality** tab:
 - **Paper Type:** Select the media type that is loaded on the printer.
 - **Print Quality:** Select Standard Options and drag the slider to Quality.



- **Color** tab > **Color Options**:
 - Select **Print in color**.
 - Select **Color Management > Application Managed Colors**.



- Click **OK** twice.

You should consider that each person has their own perception and their own subjective opinion about the result; this is because there are various factors that can influence our opinions, such as the type of photo (portrait, landscape...), the source color space, the media used, the environmental conditions, the subjective perception about your own photo, etc.... This means that the printing suggestion may not completely match with your own personal opinion.

For more information on HP Designjet products

www.hp.com/go/designjet

© 2006 Hewlett-Packard Development Company, L.P. The information contained herein is subject to change without notice. The only warranties for HP products and services are set forth in the express warranty statements accompanying such products and services. Nothing herein should be construed as constituting an additional warranty. HP shall not be liable for technical or editorial errors or omissions contained herein.

Adobe Photoshop and PostScript are trademarks of Adobe Systems Incorporated. PANTONE is Pantone, Inc.'s check-standard trademark for color.

Rev. 1.0, 09/2006

