



Proof a press with Pantone Colors

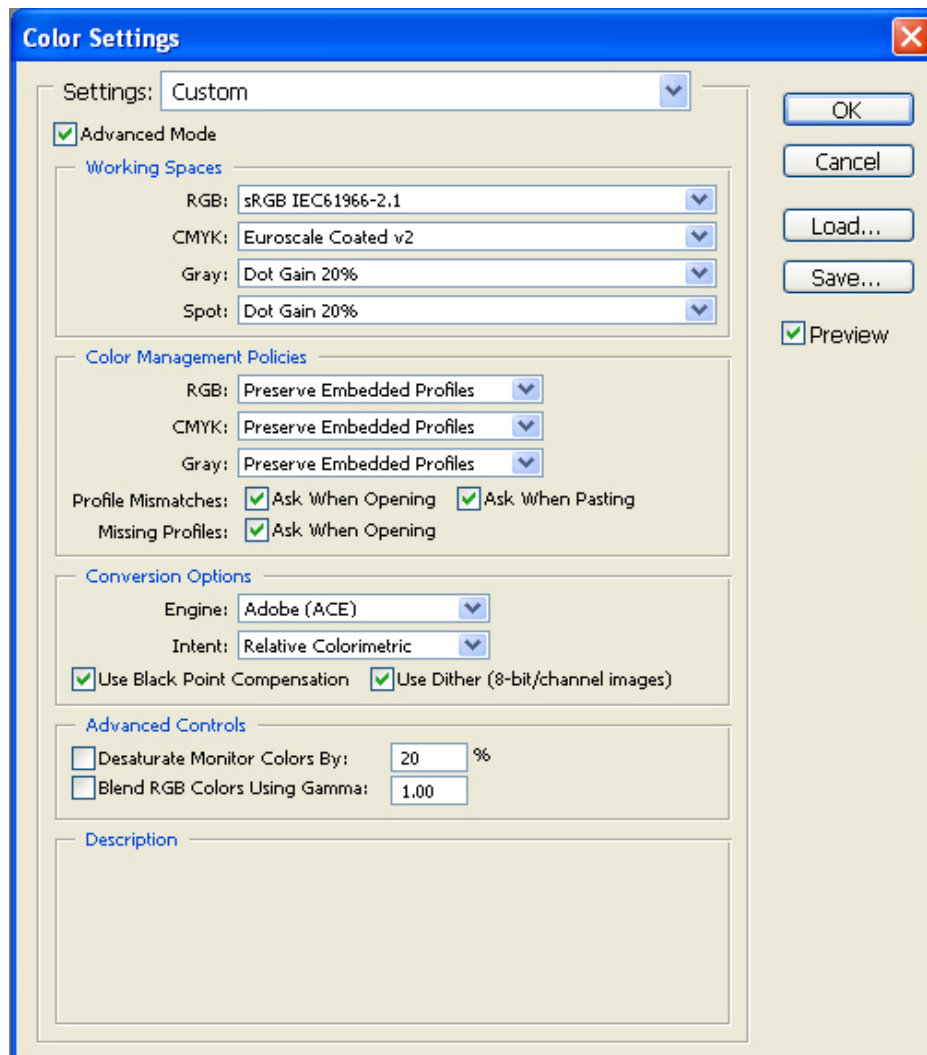
Application: Adobe Photoshop CS

Printer: HP Designjet 4000 series

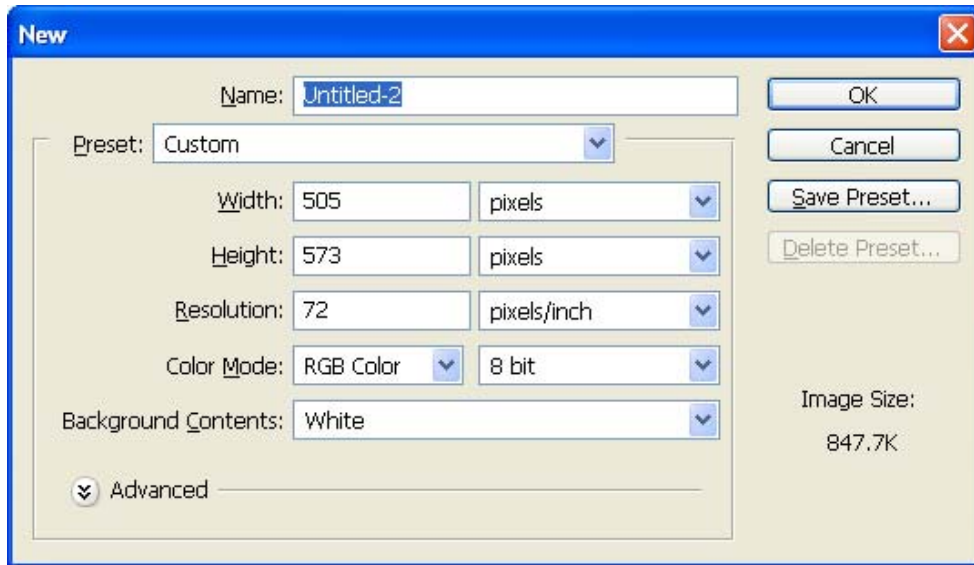
Software: PS Driver

Operating System: Windows

1. First recommendations:
 - Some paper types are better than others for proofing, see the [Media type functionality & features](#) and choose the most appropriate media.
 - Ensure that the Paper Type setting on the front panel corresponds to the paper you intend to use. It is essential that the paper is correctly calibrated for the printer, consult the [Calibrate my printer](#) section.
2. Open Adobe Photoshop CS.
3. Configure the **Color Settings, Edit menu > Color Settings...**:
 - Make sure that the **Advance Mode** check box is ticked.
 - **Working Space > RGB**: sRGB IEC61966-2.1.
 - **Conversion Options > Intent**: Relative Colorimetric.



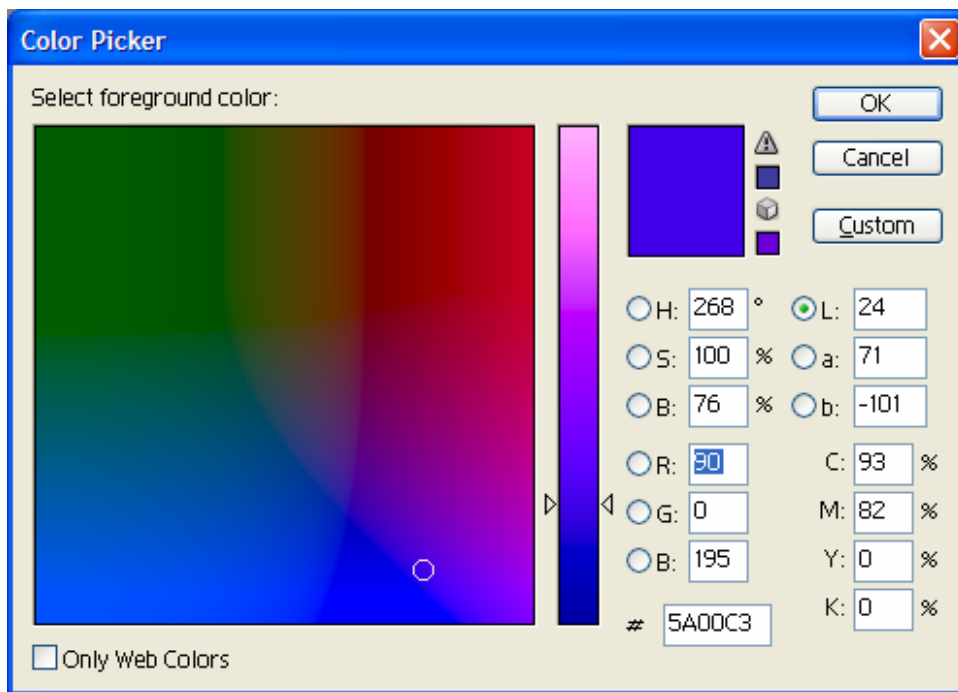
4. Create a new file in an RGB color mode, **File menu -> New...**:
 - **Width, Height and Resolution**: select the image size and resolution you need.
 - **Color Mode**: RGB Color



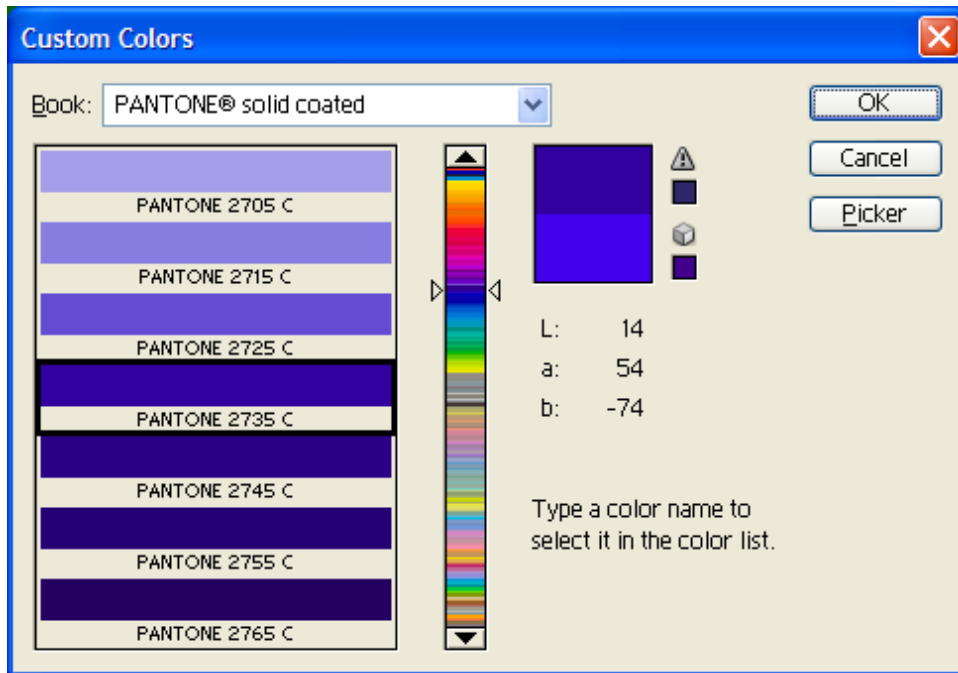
- Click **OK**.

5. Select your Pantone Color and draw/paint your image:

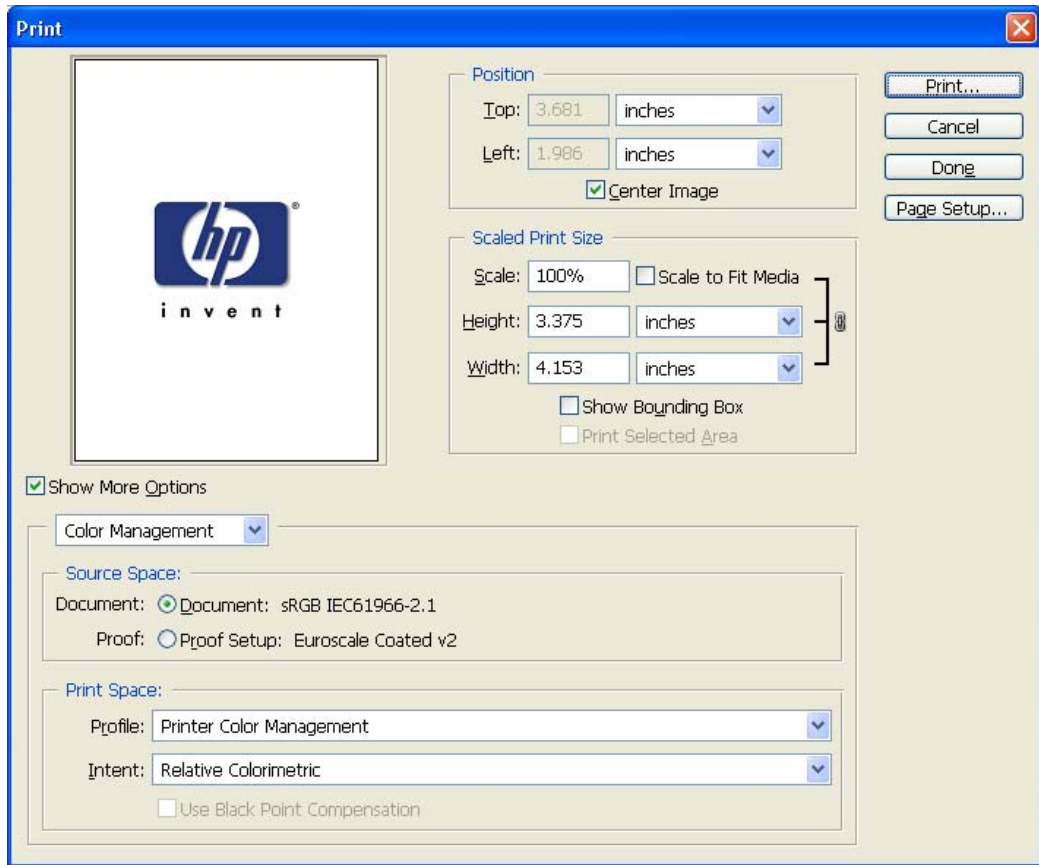
- Double-click on the **Color box** of the **Tools** window to open the **Color Picker**:



- Select **Custom** and open the **Pantone Solid Coated** book, now you can select the desired Pantone color.

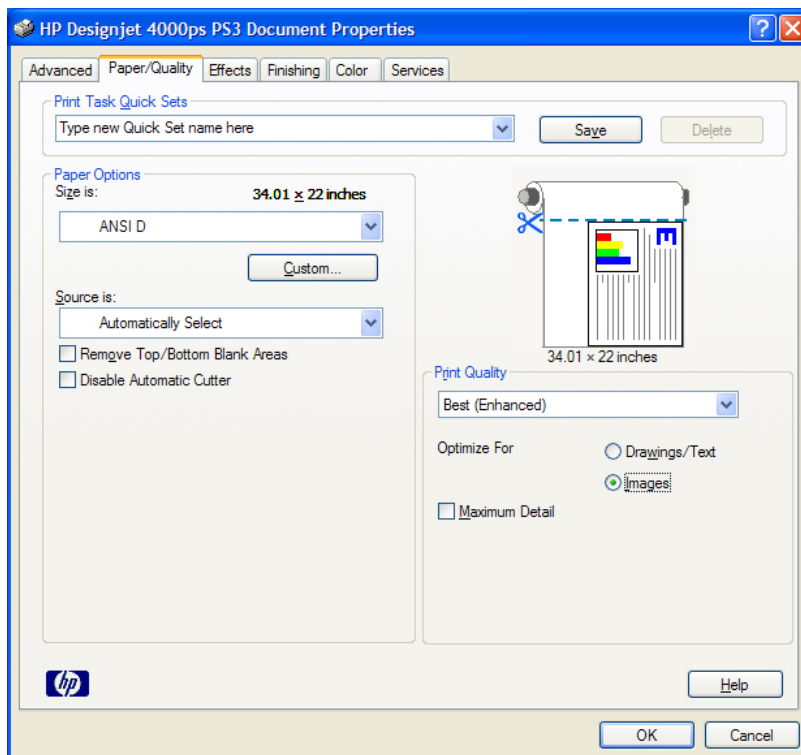


- Click **OK**. Now you can paint/draw.
6. Adobe Photoshop **Print with Preview...** settings. **File menu > Print with Preview...**:
- **Page Setup...**
 - **Printer...**: Select the printer (ex. HP Designjet 4000ps PS3).
 - Click **OK**.
 - **Paper Size**: Select the desired paper size.
 - **Orientation**: Select the orientation of your image on the paper.
 - Click **OK**.
 - Set the **Position** and the **Scaled Print Size** you need.
 - Check **Show More Options**.
 - Select the **Color Management** tab:
 - **Source Space**: Document.
 - **Print Space > Profile**: Printer Color Management.
 - **Print Space > Intent**: Relative Colorimetric.



7. Driver Settings, **Print... > Properties:**

- **Paper/Quality** tab:
 - **Print Quality:** Best (enhanced).
 - **Optimize for:** Images



- **Color Options** tab: You don't need to apply these settings because you have selected the **Printer Color Management** option in the application. The application tells the driver which source profile and rendering intent should be used for the conversion to the print space, these are the Document profile and the Print Space Intent in the application. The driver Input Profile and Rendering Intent will be overridden.
- Click **OK** twice.

For more information on HP Designjet products

www.hp.com/go/designjet

© 2005 Hewlett-Packard Development Company, L.P. The information contained herein is subject to change without notice. The only warranties for HP products and services are set forth in the express warranty statements accompanying such products and services. Nothing herein should be construed as constituting an additional warranty. HP shall not be liable for technical or editorial errors or omissions contained herein.

Adobe Photoshop and PostScript are trademarks of Adobe Systems Incorporated. PANTONE is Pantone, Inc.'s check-standard trademark for color.

Rev. 1.0, 09/2005

